

3/7/2018 11:29:10 AM

E

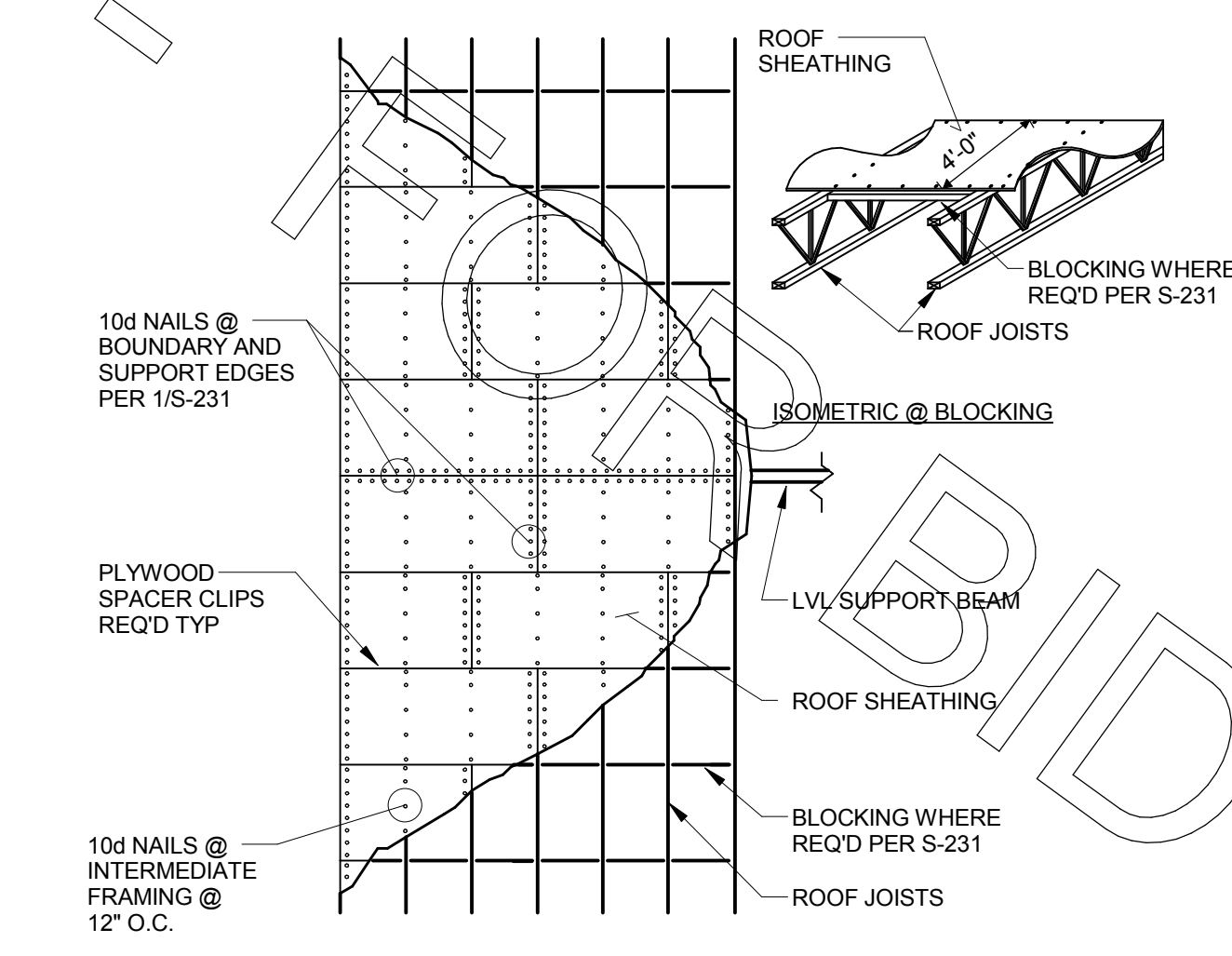
D

C

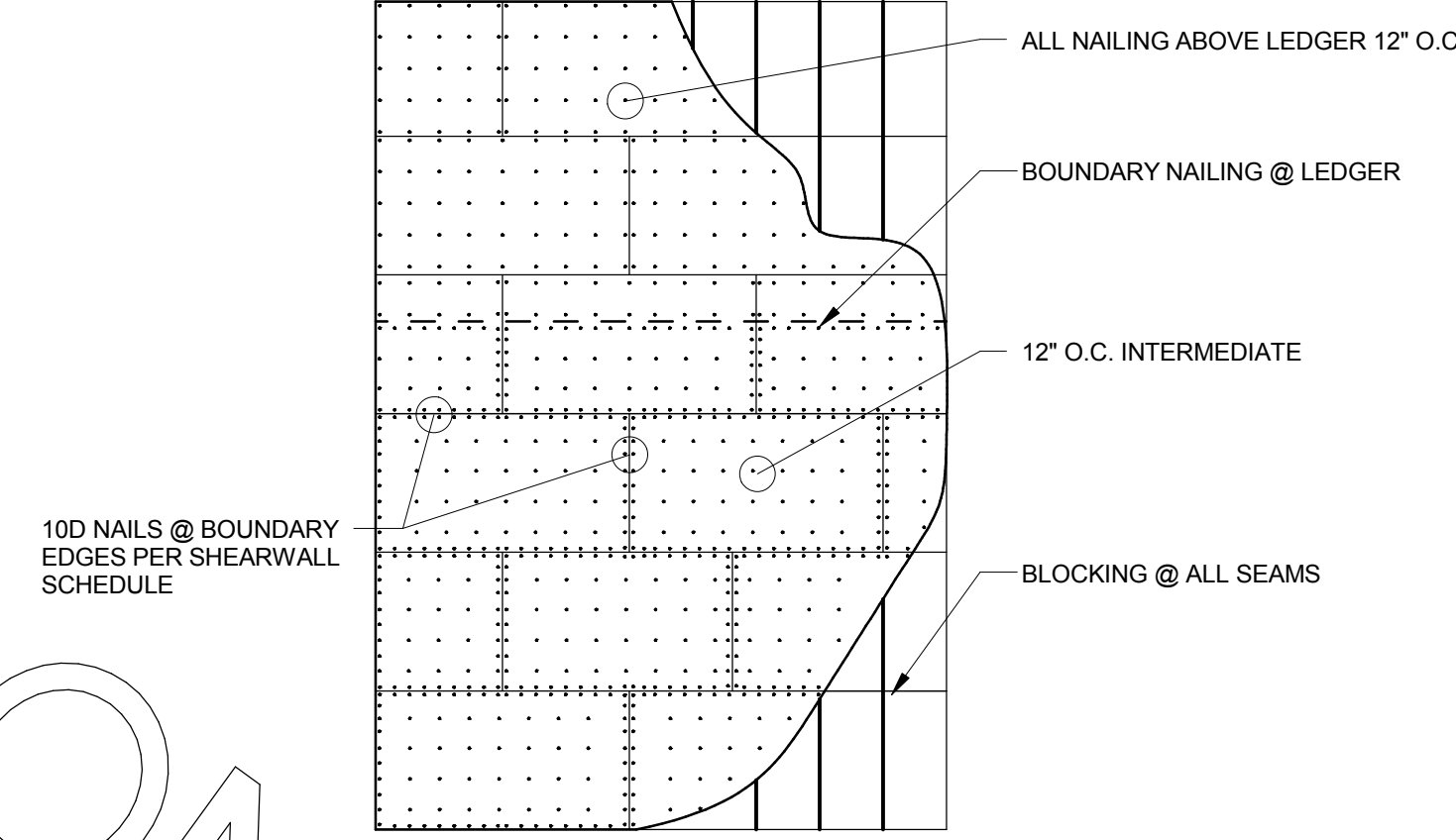
B

A

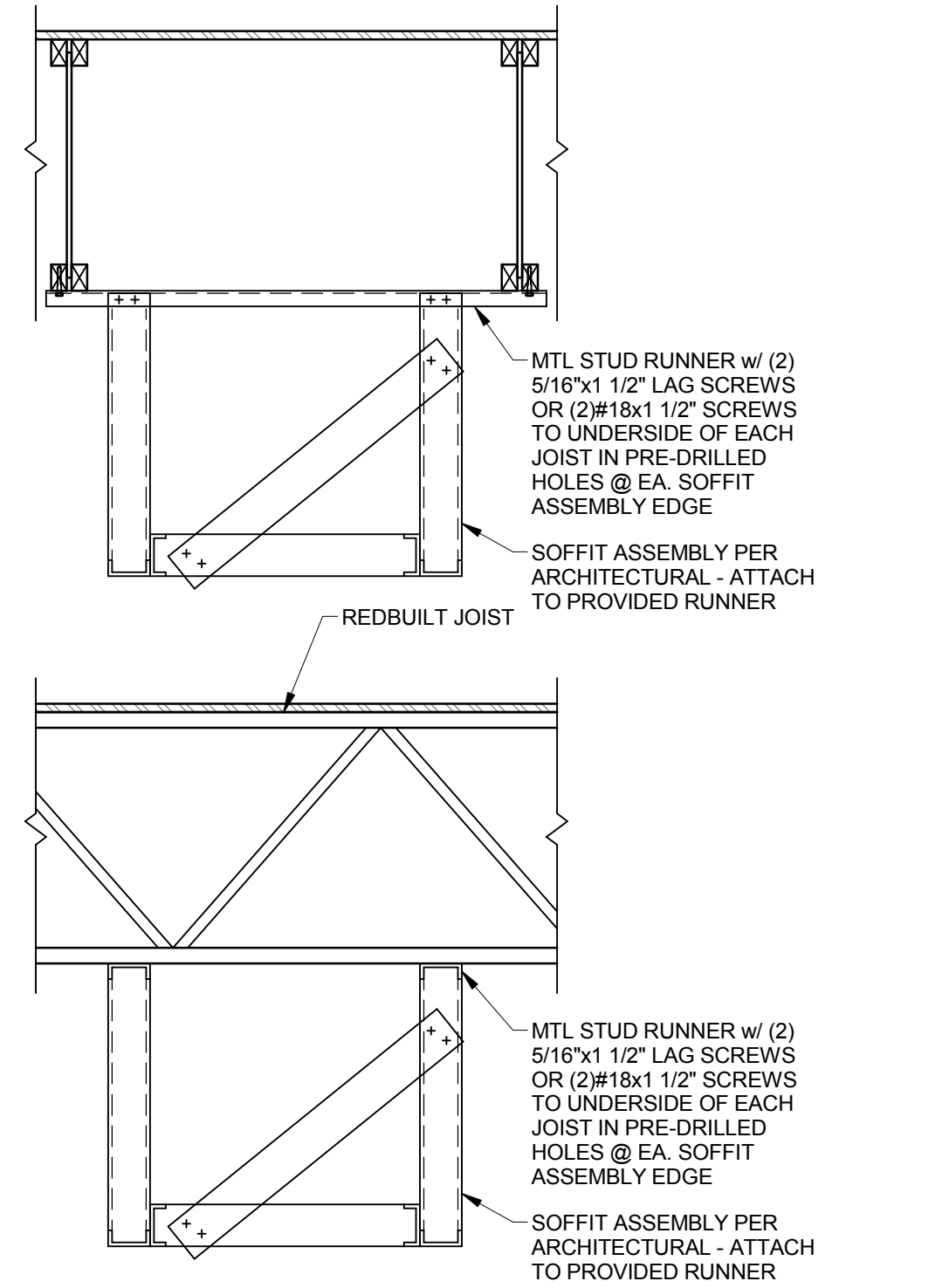
D4 ROOF DIAPHRAGM NAILING
3/4" = 1'-0"



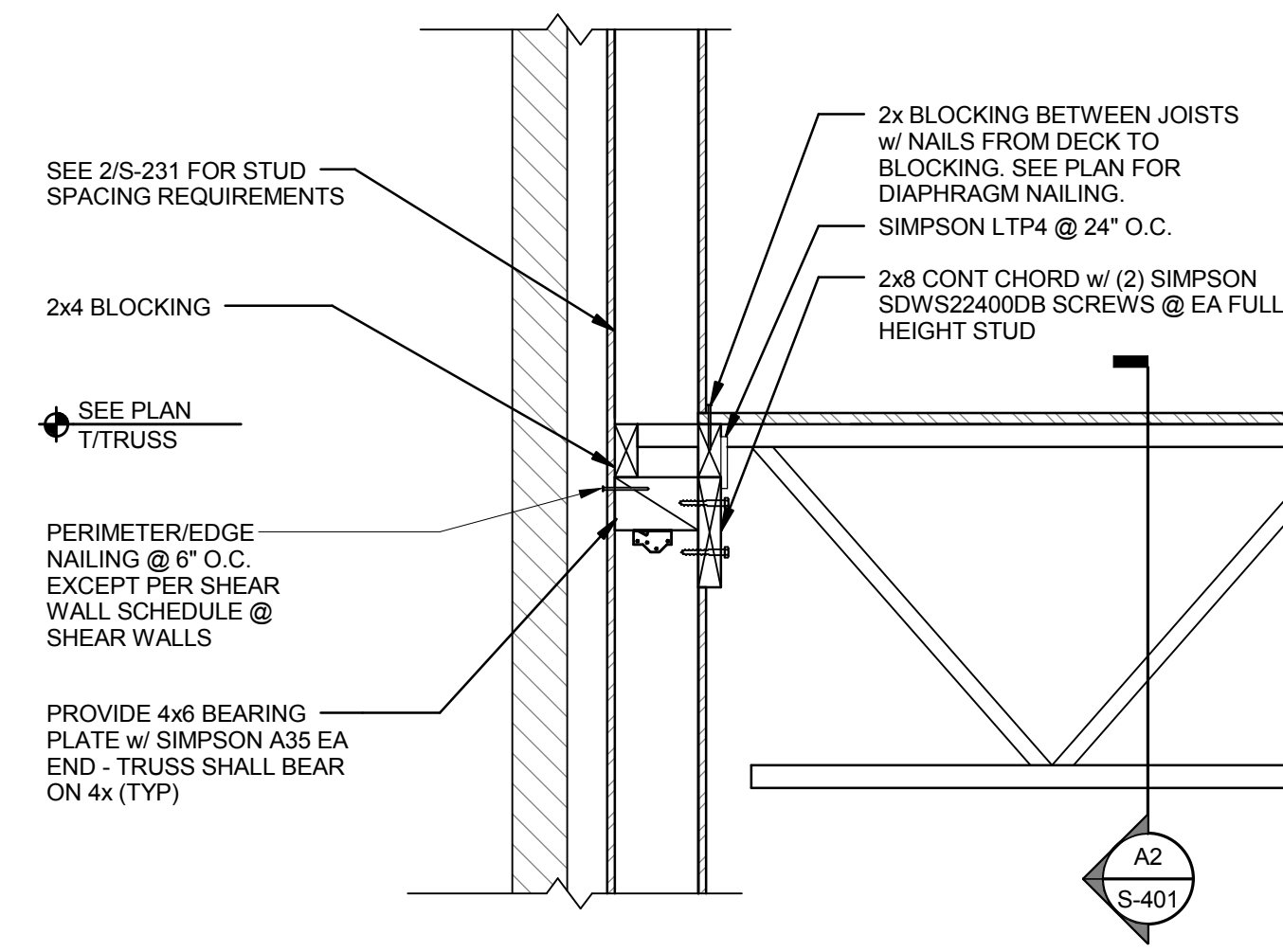
D3 TYP SHEAR WALL SHEATHING
1/4" = 1'-0"



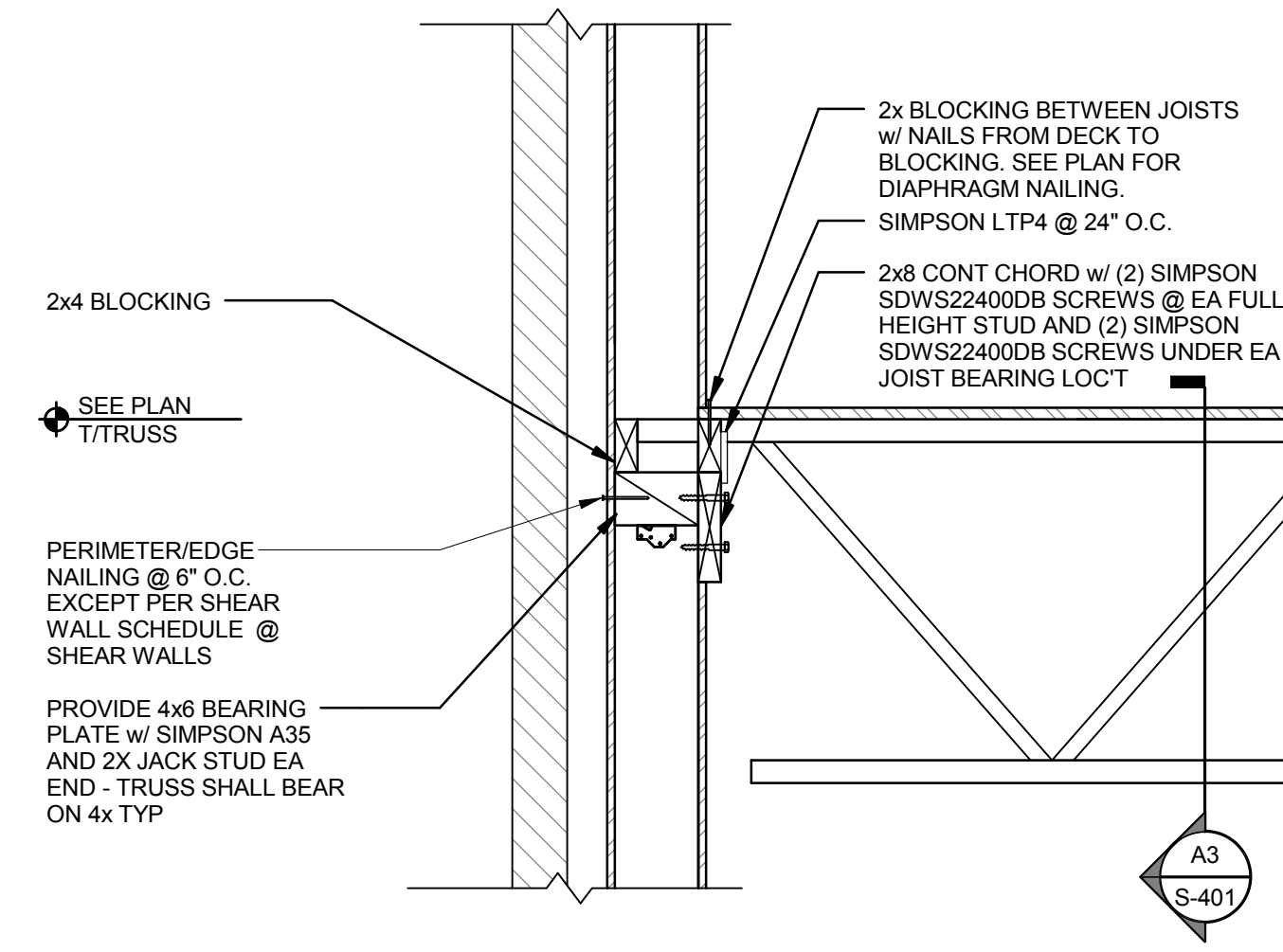
D2 SOFFIT FRAMING
3/4" = 1'-0"



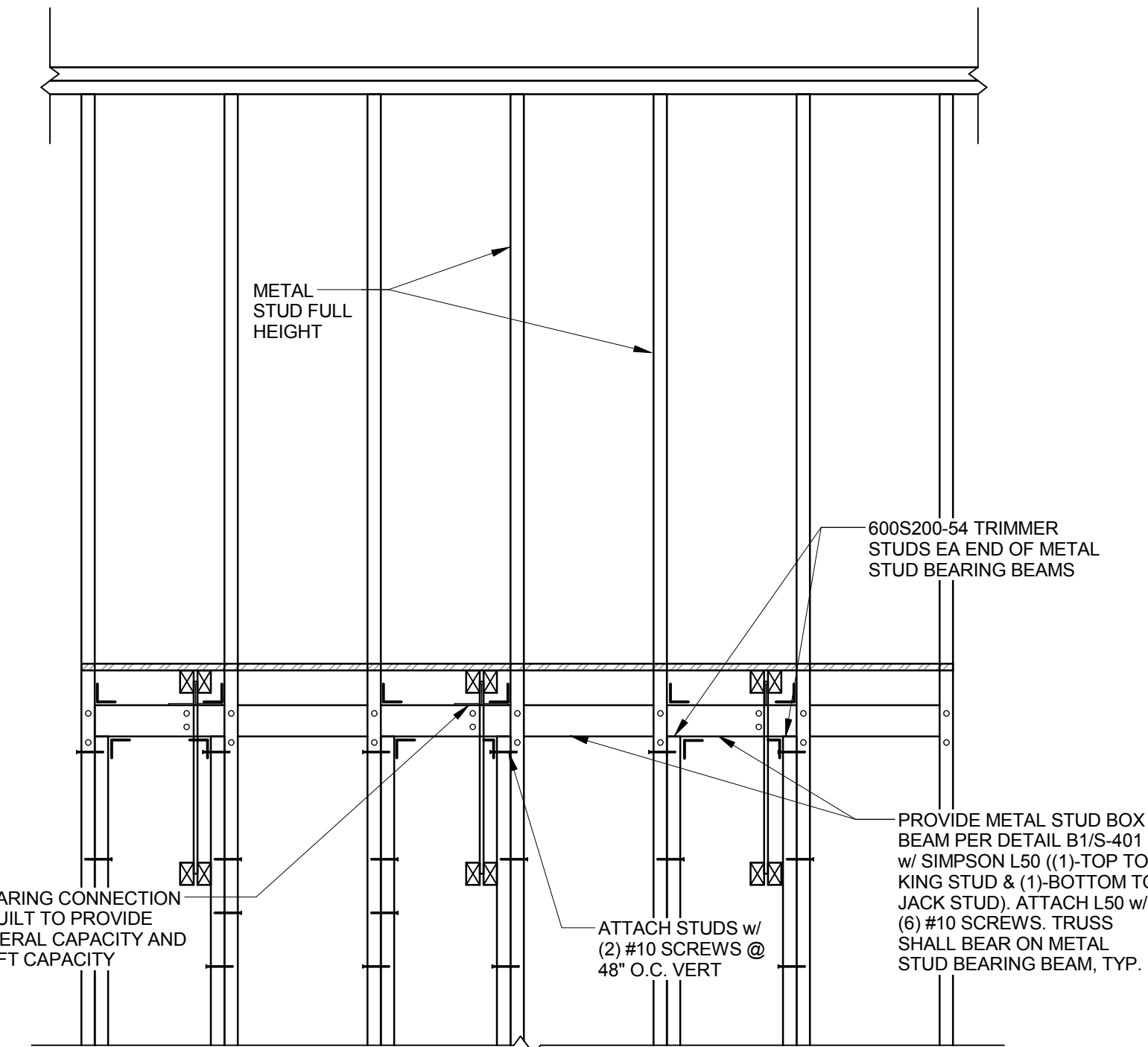
D1 TYP WOOD WALL CONNECTION DETAIL (2)2X6
1" = 1'-0"



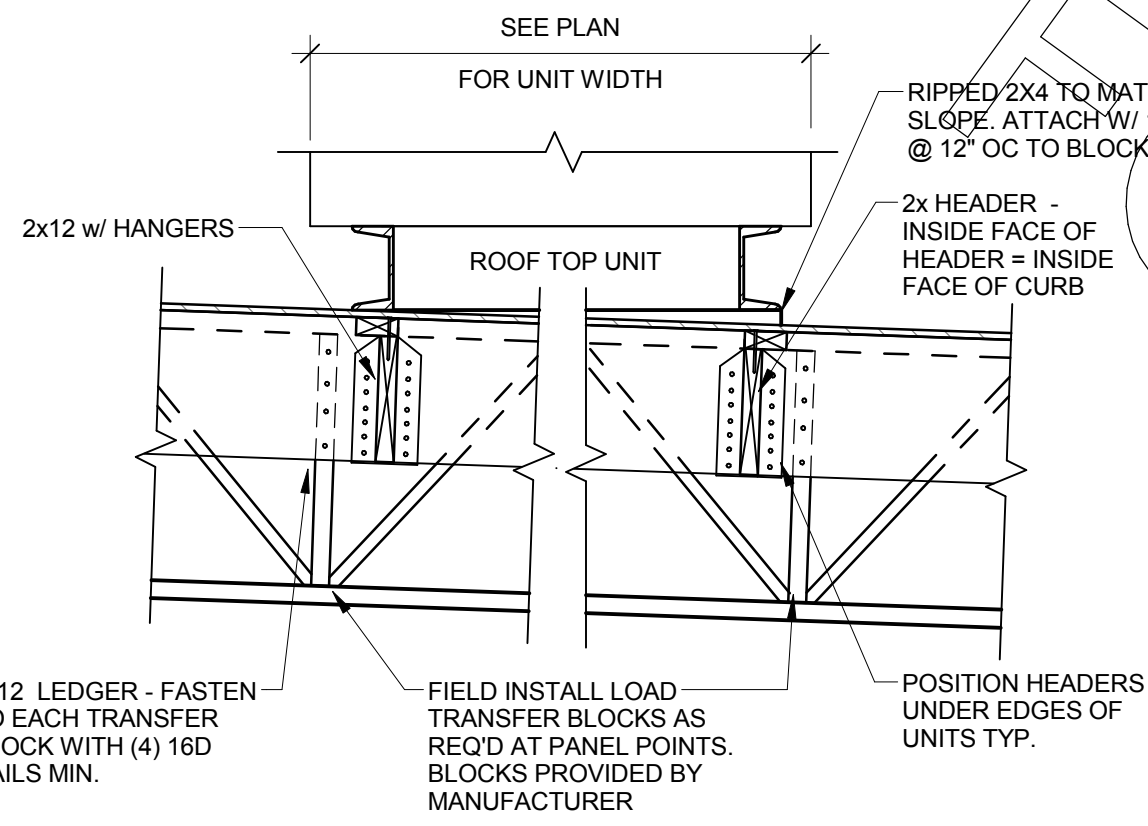
C1 TYP WOOD WALL CONNECTION DETAIL
1" = 1'-0"



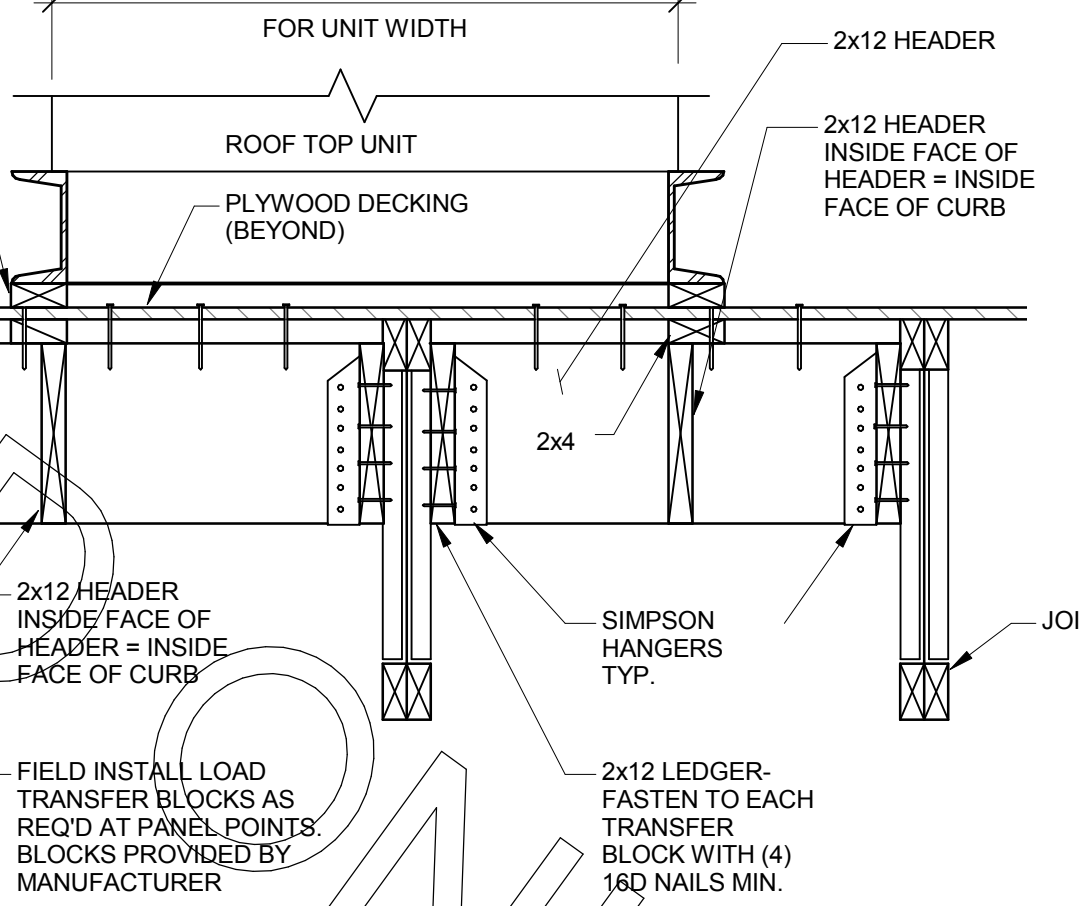
C4 DOUBLE SIDED SHEAR WALL DETAIL
3/4" = 1'-0"



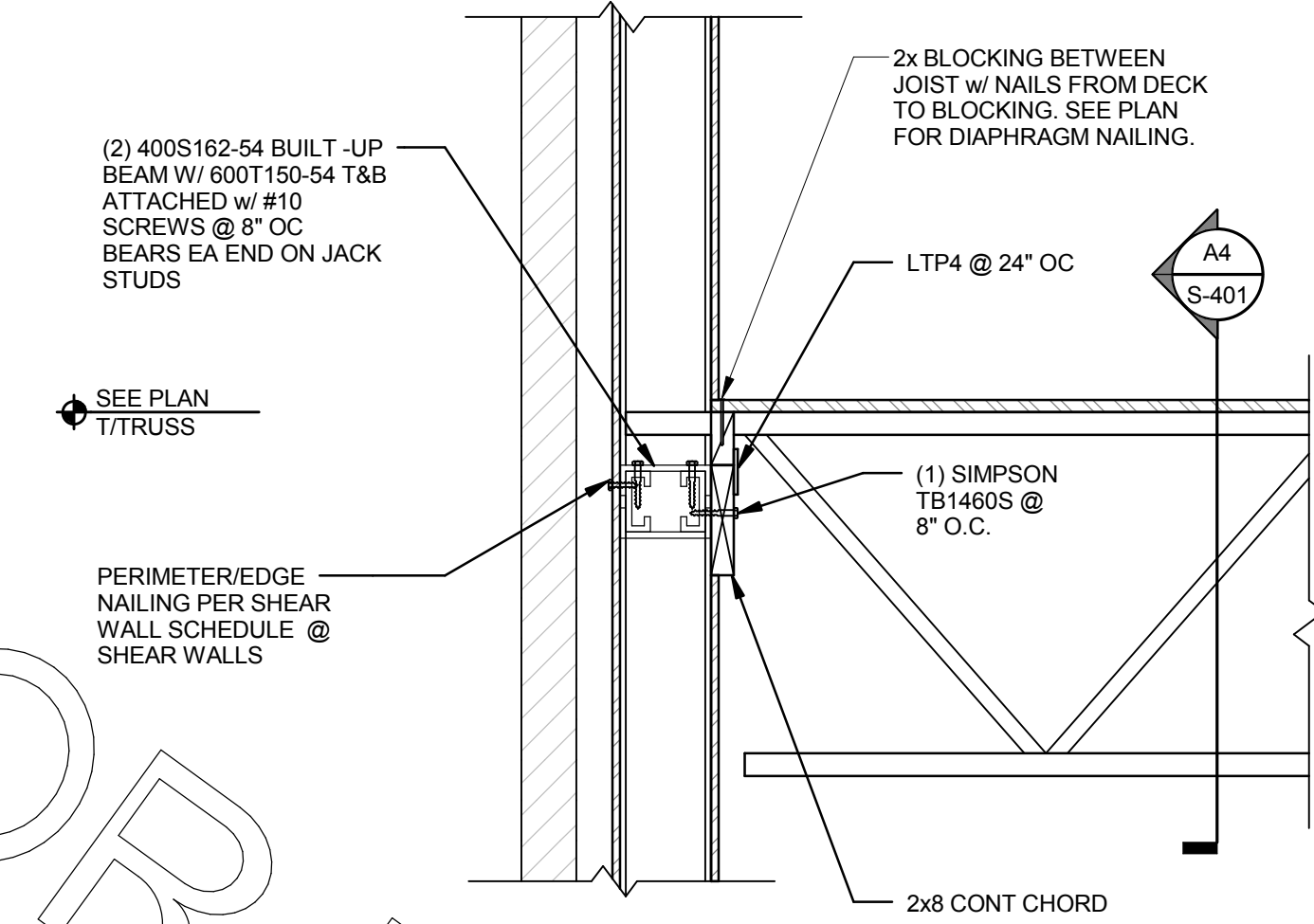
C3 SECTION @ RTU FRAMING
3/4" = 1'-0"



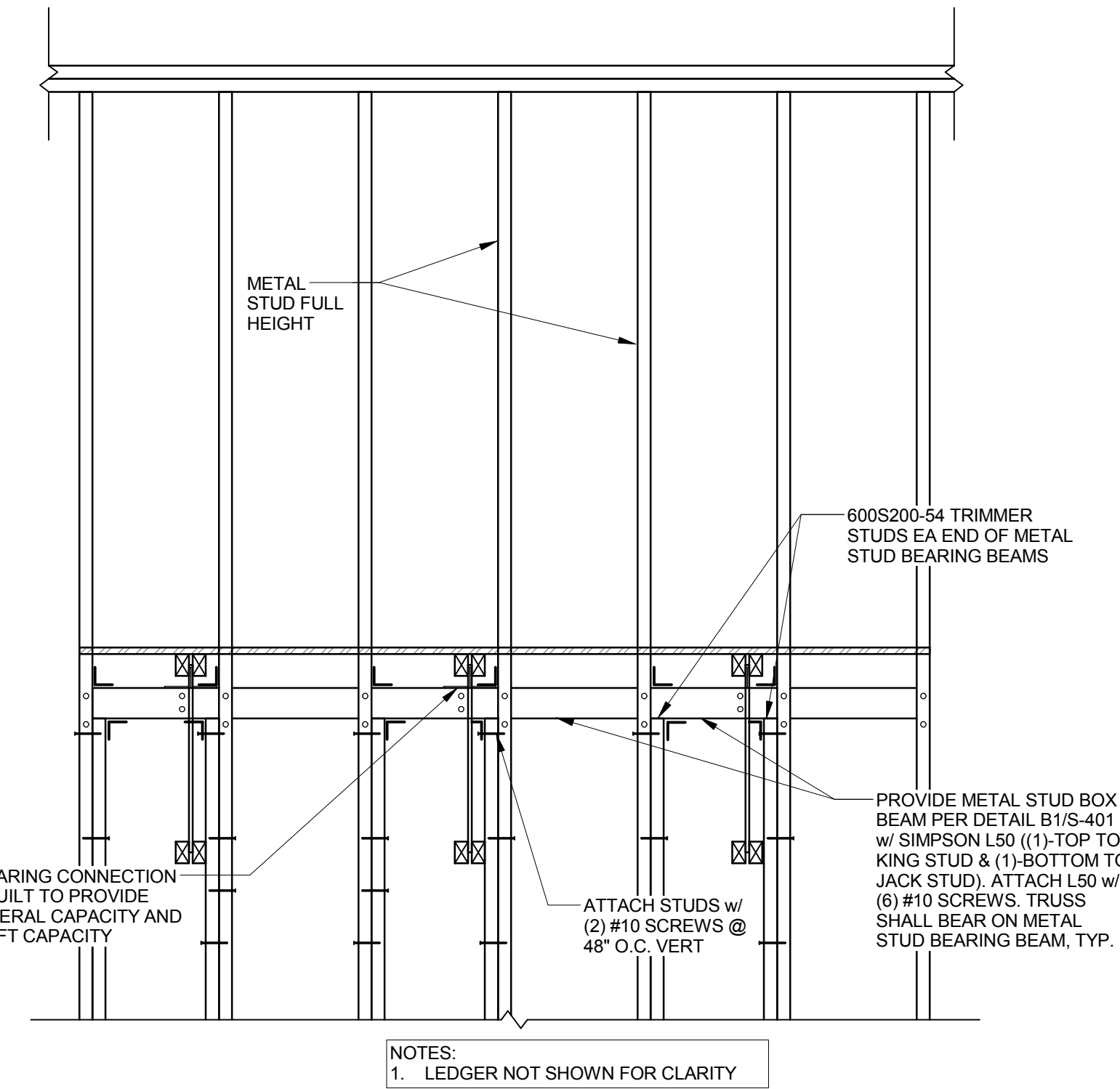
C2 TYP RTU FRAMING SECTION
1" = 1'-0"



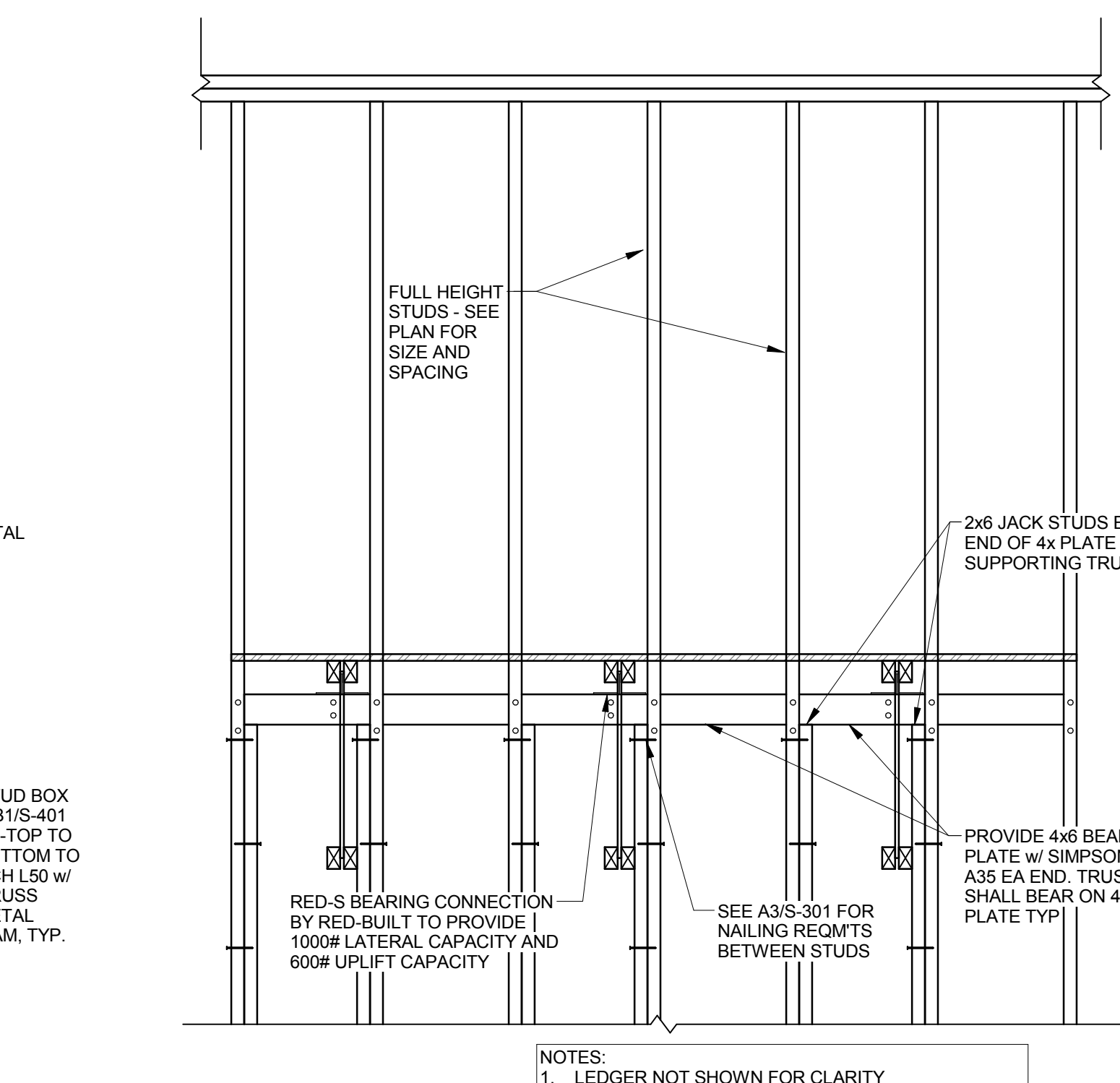
B1 TYP MTL STUD WALL CONNECTION DETAIL
1" = 1'-0"



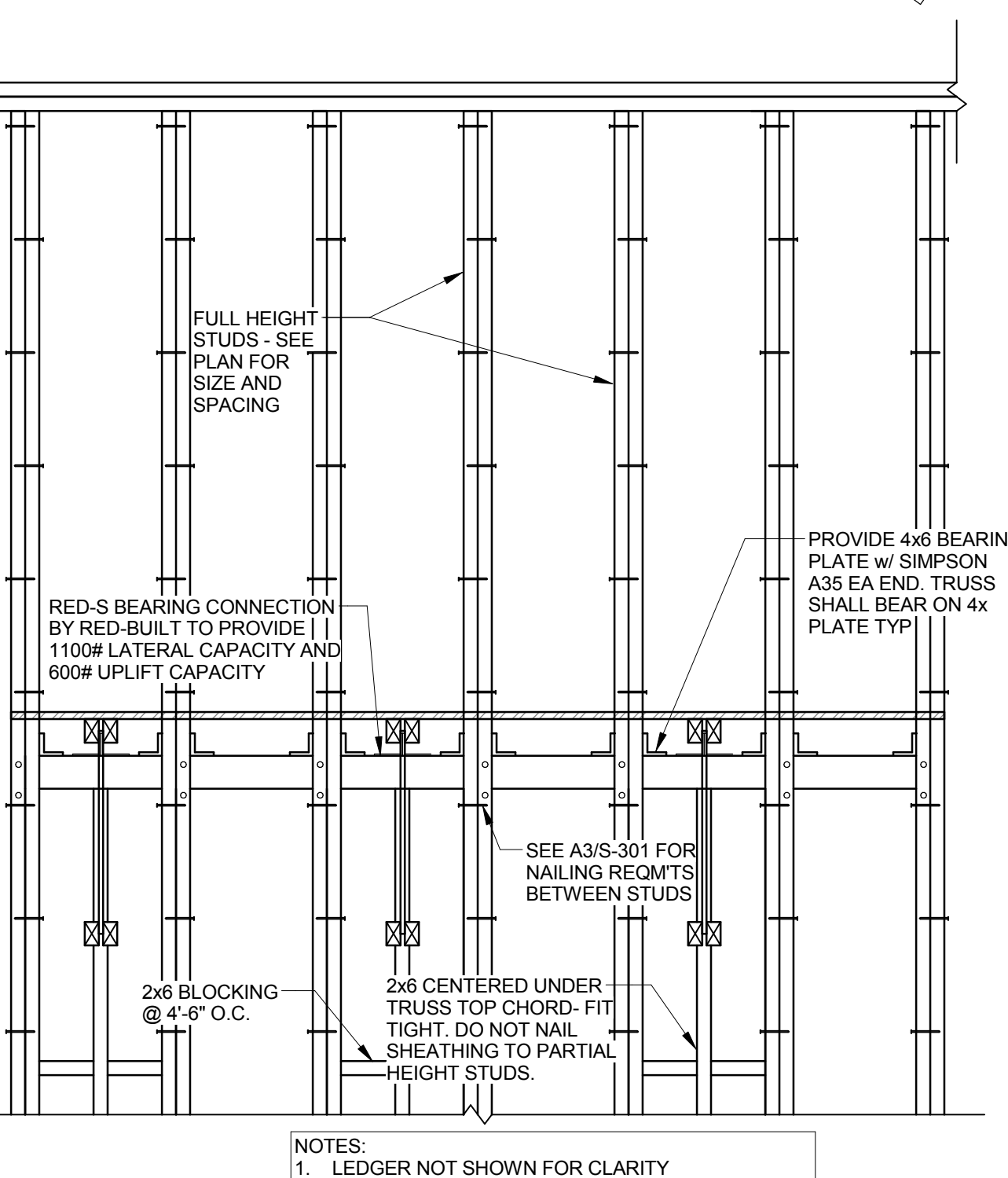
A4 ELEVATION @ METAL STUD WALL
3/4" = 1'-0"



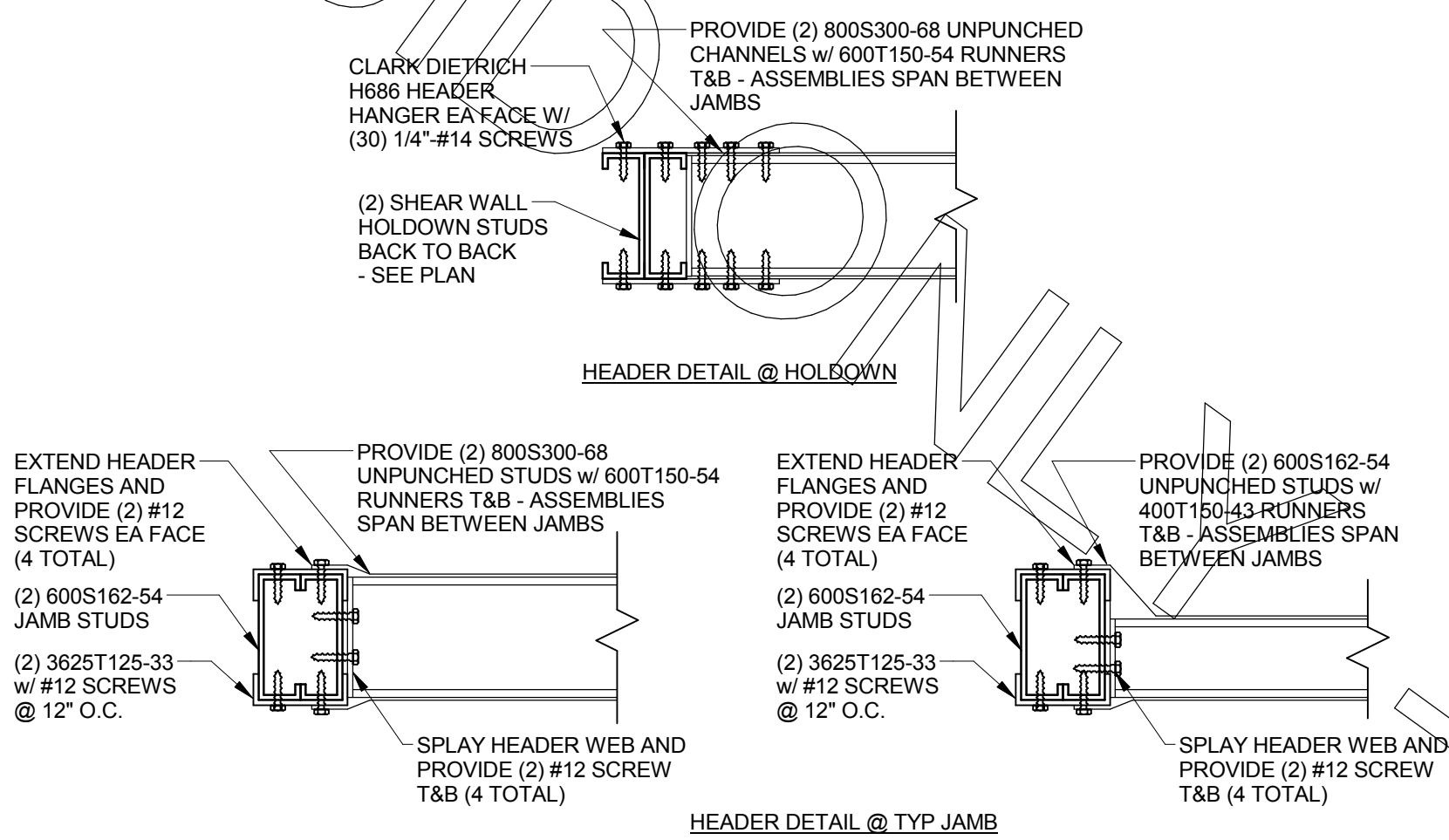
A3 ELEVATION @ LOAD BEARING WALLS
3/4" = 1'-0"



A2 ELEVATION @ LOAD BEARING WALLS - (2)2X6
3/4" = 1'-0"



A1 DETAIL @ HEADER TO JAMB CONNECTION
1 1/2" = 1'-0"



Chick-fil-A

Chick-fil-A
5200 Buffington Road
Atlanta, Georgia 30349-2998

INTERPLAN

ARCHITECTURE
ENGINEERING
INTERIOR DESIGN
PROJECT MANAGEMENT
604 COURTLAND STREET
SUITE 100
ORLANDO, FLORIDA 32804
PH 407.645.5008
FX 407.629.9124



**BRITT, PETERS
ASSOCIATES**
consulting engineers
999 WATERSIDE DRIVE
SUITE 2202
NORFOLK, VA 23510
PH 757.965.5710
BP# 171143

SEAL: THIS DOCUMENT IS "NOT FOR CONSTRUCTION"
UNLESS THE SEAL AND SIGNATURE OF A REGISTERED PROFESSIONAL ENGINEER ARE PRESENT.
SIGNATURE AND SEAL TO BE PLACED BELOW:

CHICK-FIL-A
Cherokee Place FSR
115 Cherokee Place, Cartersville, GA 30121

FSU# 00534

REVISION SCHEDULE

NO.	DATE	DESCRIPTION
1		

ENGINEERS PROJECT # 171143

PRINTED FOR BID

DATE December 7, 2017

DESIGNED BY WBU

DRAWN BY JNJ

Information contained on this drawing and in all digital files produced for above named project may not be reproduced in any manner without express written or verbal consent from authorized project representatives.

SHEET SECTIONS & DETAILS

SHEET NUMBER

S-401