

CORNER RECORD

Agency Index

BOOK 112 PAGE 64

Document Number

CR 11432

City of OAKLANDCounty of ALAMEDA, California

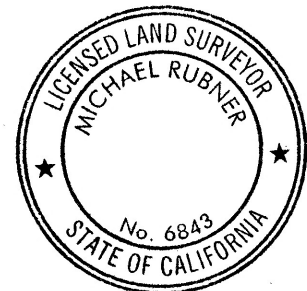
Brief Legal Description

CITY MONUMENT AS SHOWN UPON THE MAP OF CITY OF OAKLAND MONUMENTS FOR STREET IMPROVEMENT
A RE-SUBDIVISION OF PINEHAVEN (43-MAPS-82A) AT 6514 VALLEY VIEW ROAD (APN 48G-7441-48-1).**CORNER TYPE****COORDINATES (Optional)**RANCHO
SAN
ANTONIO
(V & D PERALTA)Government Corner ☐ Control
Meander ☐ Property
Rancho ☐ OtherN. 2134706.9 ± E. 6067953.1 ±☒ ElevationUnits Metric ☐ U.S. Survey Foot ☒☐ Horizontal Datum CCS 83Zone 3 Epoch Date

Vertical Datum

Date of Survey 4/11/2018☐ Complies with Public Resources Code §§8801-8819☐ Complies with Public Resources Code §§8890-8902PLS Act Ref: ☐ 8765(d)☒ 8771☐ 8773☐ Other:Corner/
Monument: ☒ Left as found☐ Established☐ Rebuilt☒ Pre-Construction☐ Found and tagged☐ Reestablished☒ Referenced☐ Post-Construction

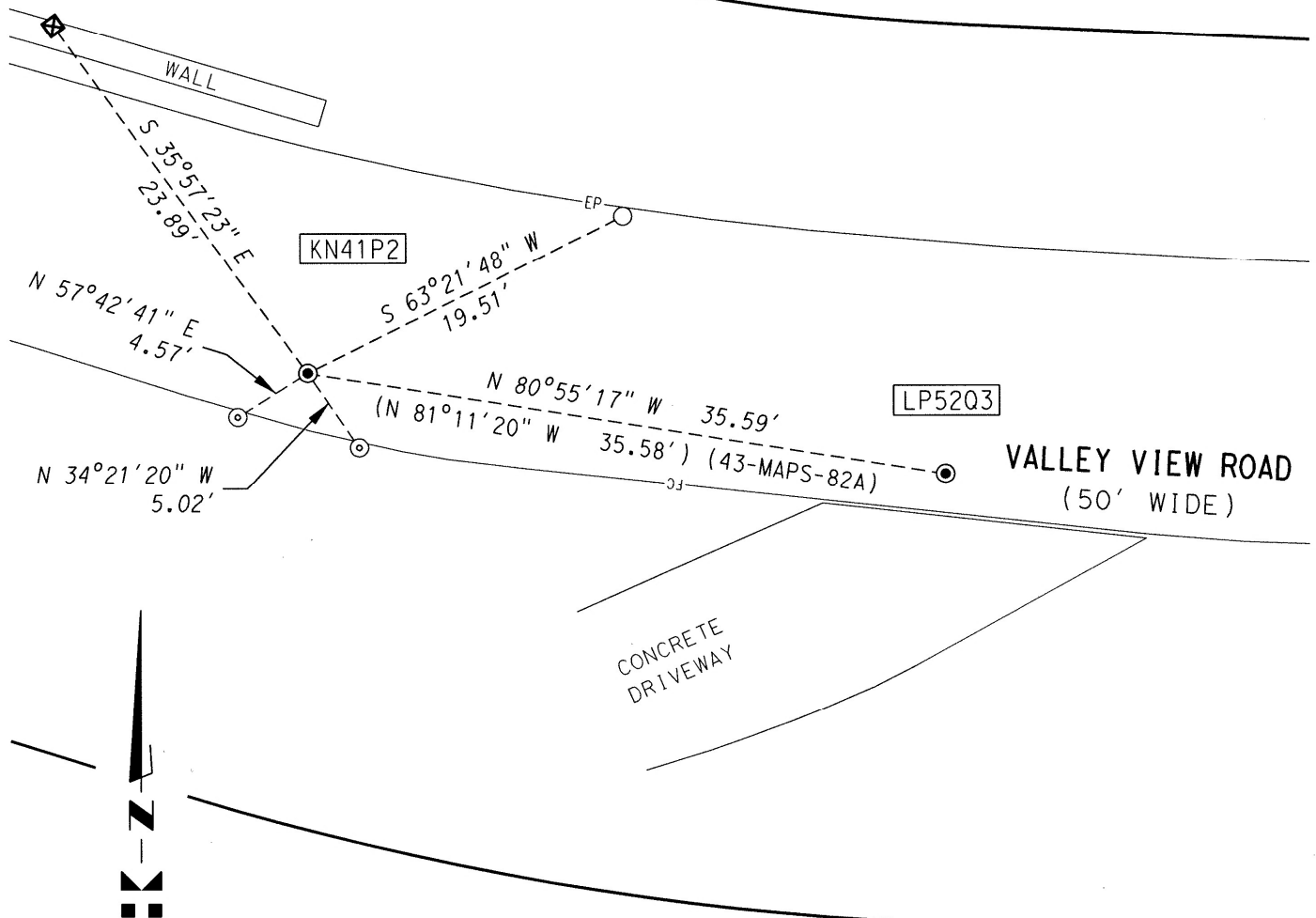
Narrative of corner identified and monument as found, set, reset, replaced, or removed:

☒ See sheet #2 for description (s):FOUND MONUMENT THAT COULD BE DAMAGED OR DESTROYED BY A PROPOSED GAS LINE CONSTRUCTION PROJECT. MONUMENT WAS
REFERENCED AS SHOWN ON PAGE 2 OF 2.THE PURPOSE OF THIS CORNER RECORD IS TO PRESERVE THE LOCATION OF THE MONUMENT PRIOR TO CONSTRUCTION. NO
ATTEMPT WAS MADE TO DETERMINE THE RELATIONSHIP BETWEEN THE MONUMENT AND PROPERTY LINES, RIGHT-OF-WAY LINES
OR CENTERLINES.**SURVEYOR'S STATEMENT**This Corner Record was prepared by me or under my direction in conformance with
the Professional Land Surveyors' Act on AUGUST 7, 2018Signed [Signature] P.L.S. or R.C.E. No. 8911**COUNTY SURVEYOR'S STATEMENT**This Corner Record was received 21 MAY 2018and examined and filed 5 SEPTEMBER 2018Signed Michael R. [Signature] P.L.S. or R.C.E. No. 6843Title COUNTY SURVEYOR

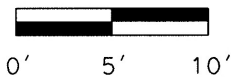
County Surveyor's Comment

CC-14126.77
 **MARK THOMAS**

RE-SUBDIVISION
 OF PINEHAVEN
 (3-MAPS-53)



SCALE: 1" = 10'



BASIS OF BEARING:

BEARING BASIS IS ASSUMED

LEGEND:

- FOUND CONCRETE MONUMENT WITH 1/4" PIN IN WELL
- SET MAG NAIL IN A.C. FOR REFERENCE POINT (COUNTERSUNK)
- ⊙ SET MAG NAIL IN A.C. CURBING FOR REFERENCE POINT (COUNTERSUNK)
- ⊠ SET CUT CROSS FOR REFERENCE POINT ATOP KEYSTONE RETAINING WALL

AAXXAX ALAMEDA COUNTY MONUMENT IDENTIFICATION NUMBER

6514 VALLEY VIEW ROAD
 APN 48G-7441-48-1