

NOTE: G.C. TO PROVIDE SUPERIOR FOAM SEALANT OR EQUAL.

NOTE: PREFAB BOOT FLASHING ALLOWED.

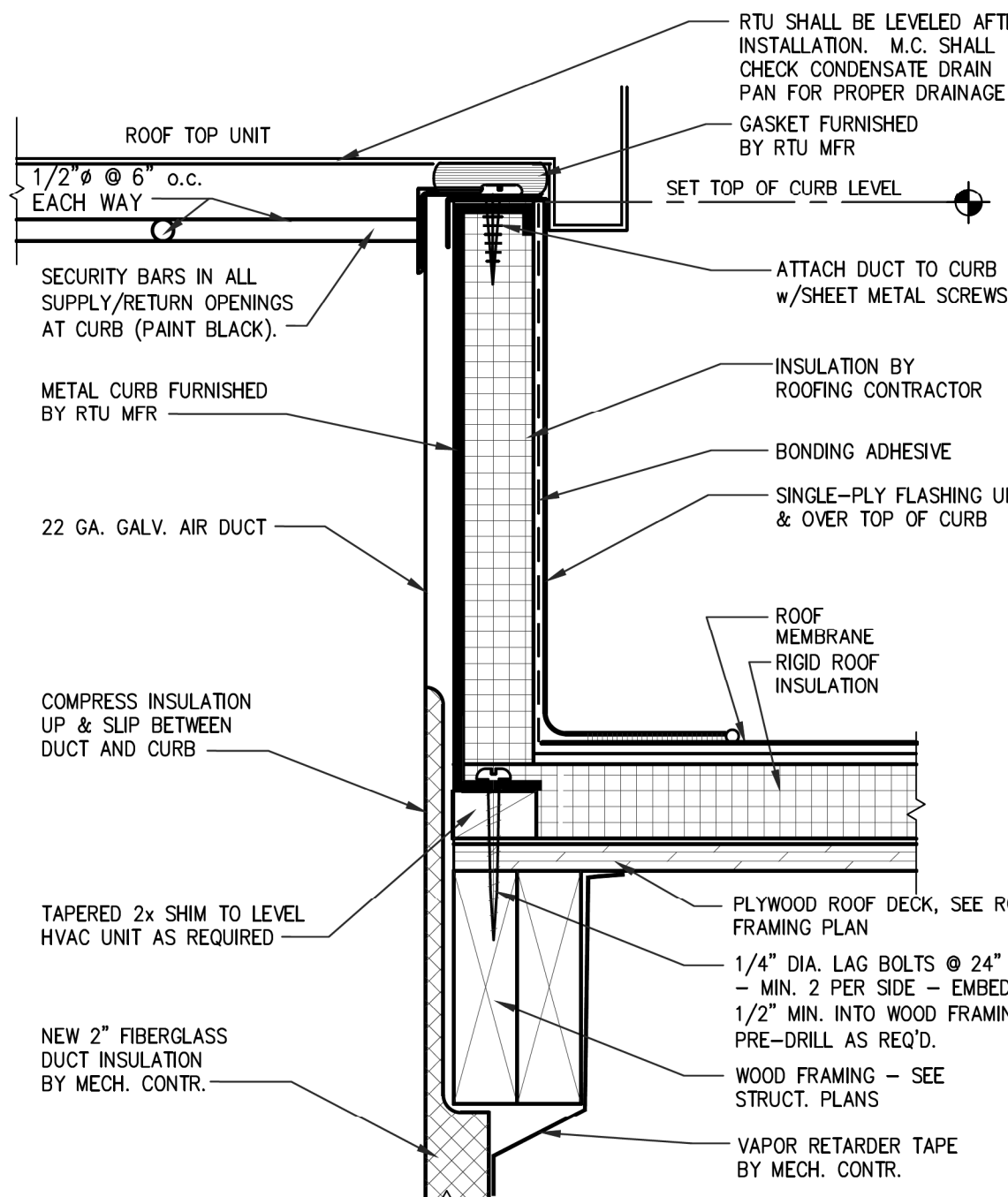
MULTI PIPE GROUPING SEALANT ALL AROUND STAINLESS STEEL CLAMP BONDING ADHESIVE SINGLE PLY FLASHING HEAT WELD SEAM SEALANT

ROOF DECK

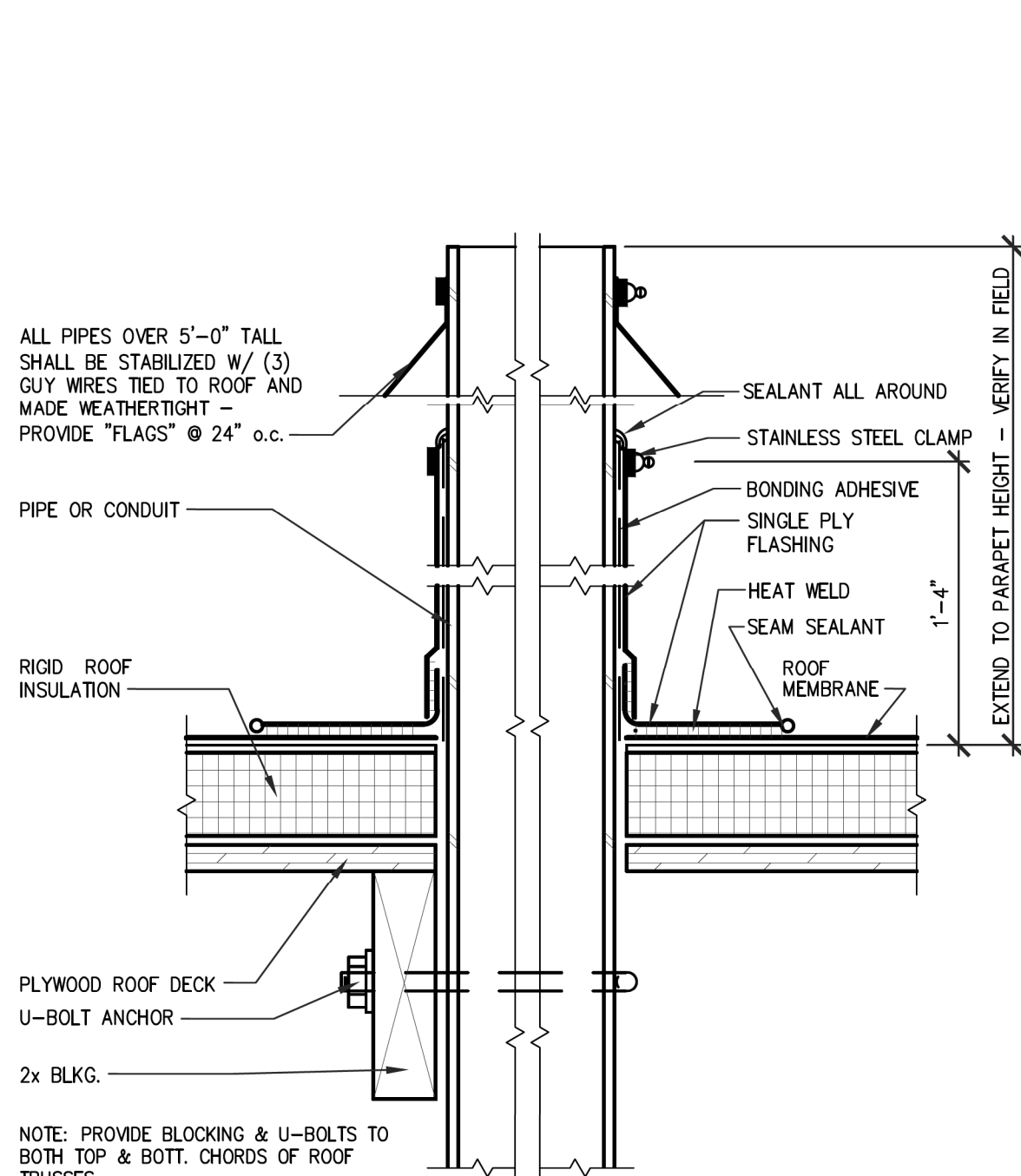
ROOF FRAMING - SEE STRUCT. DWGS

BLKG. FASTENED TO MIN. (2) WEB MEMBERS WITH 1/2" Ø 10" BOLTS THICKNESS AS REQ'D FOR TIGHT FIT TO BOTH CONDUIT AND WEB MEMBER.

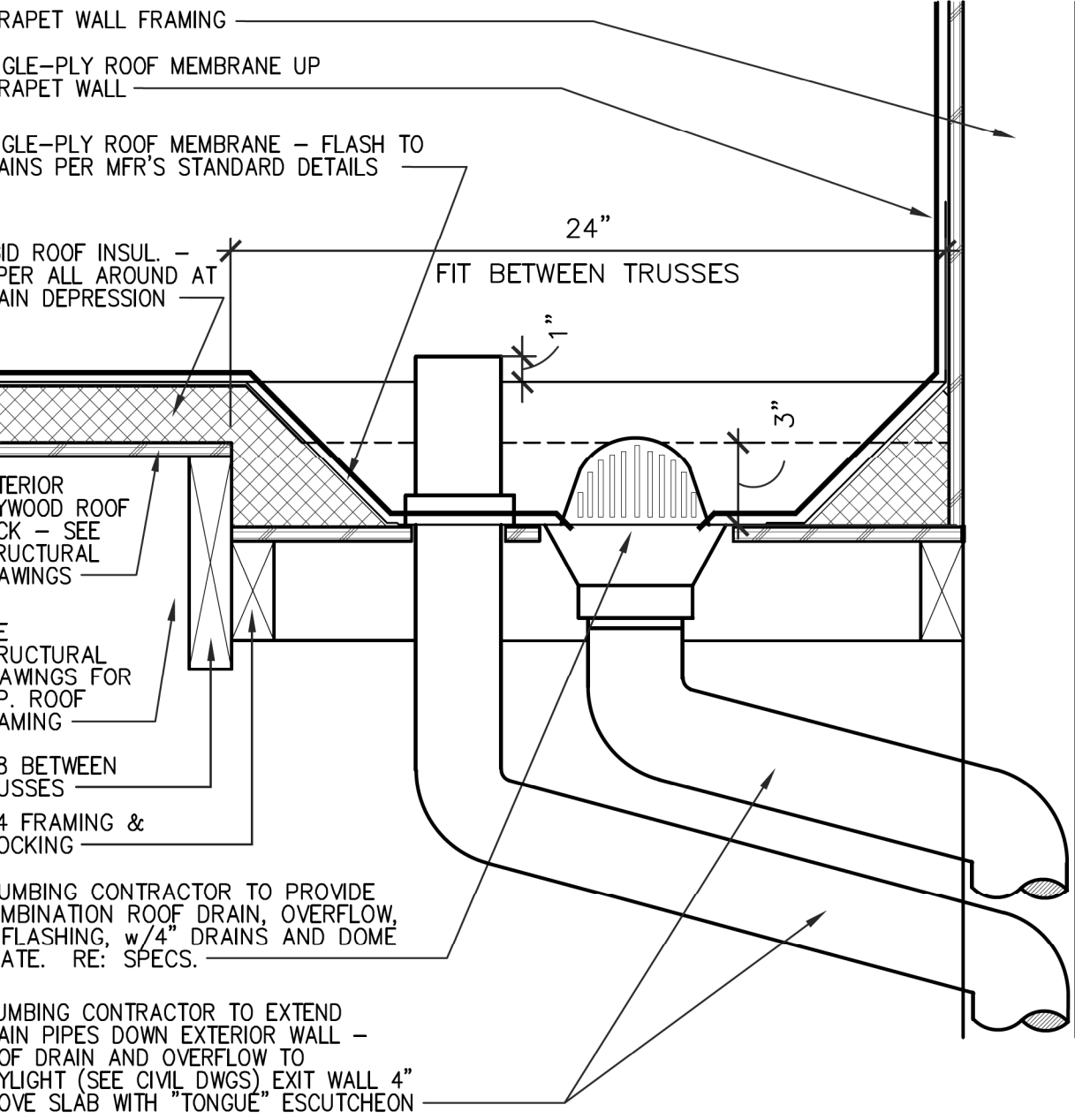
5 CONDUIT SLEEVE THRU ROOF
A161 SCALE: 1 1/2" = 1'-0"



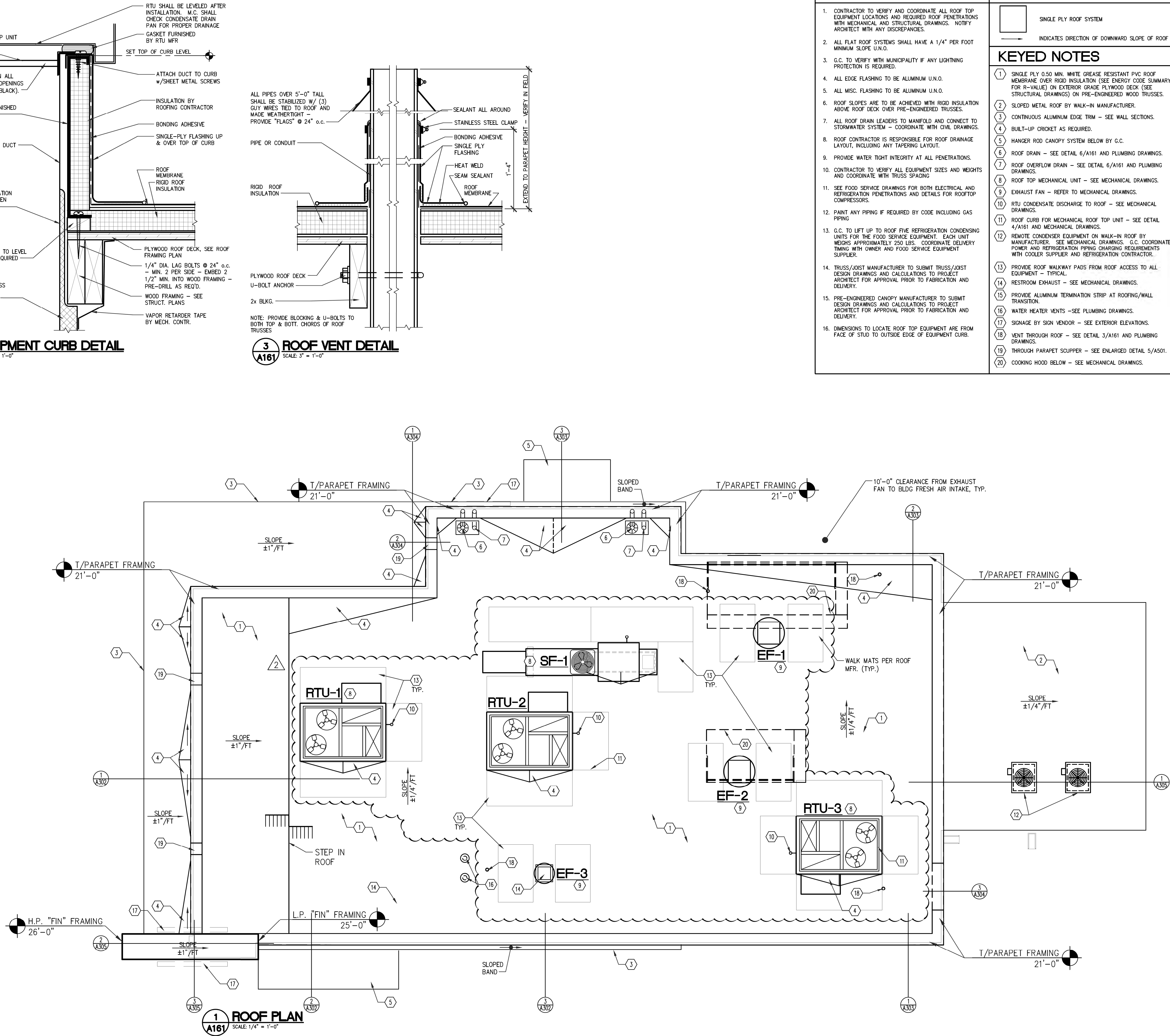
4 EQUIPMENT CURB DETAIL
A161 SCALE: 3" = 1'-0"



3 ROOF VENT DETAIL
A161 SCALE: 3" = 1'-0"



6 ROOF DRAIN AND OVERFLOW
A161 SCALE: 1 1/2" = 1'-0"



1 ROOF PLAN
A161 SCALE: 1/4" = 1'-0"

GENERAL NOTES

1. CONTRACTOR TO VERIFY AND COORDINATE ALL ROOF TOP EQUIPMENT LOCATIONS AND REQUIRED ROOF PENETRATIONS WITH MECHANICAL AND STRUCTURAL DRAWINGS. NOTIFY ARCHITECT WITH ANY DISCREPANCIES.
2. ALL FLAT ROOF SYSTEMS SHALL HAVE A 1/4" PER FOOT MINIMUM SLOPE U.N.O.
3. G.C. TO VERIFY WITH MUNICIPALITY IF ANY LIGHTNING PROTECTION IS REQUIRED.
4. ALL EDGE FLASHING TO BE ALUMINUM U.N.O.
5. ALL MISC. FLASHING TO BE ALUMINUM U.N.O.
6. ROOF SLOPES ARE TO BE ACHIEVED WITH RIGID INSULATION ABOVE ROOF DECK OVER PRE-ENGINEERED TRUSSES.
7. ALL ROOF DRAIN LEADERS TO MANIFOLD AND CONNECT TO STORMWATER SYSTEM - COORDINATE WITH CIVIL DRAWINGS.
8. ROOF CONTRACTOR IS RESPONSIBLE FOR ROOF DRAINAGE LAYOUT, INCLUDING ANY TAPERING LAYOUT.
9. PROVIDE WATER TIGHT INTEGRITY AT ALL PENETRATIONS.
10. CONTRACTOR TO VERIFY ALL EQUIPMENT SIZES AND WEIGHTS AND COORDINATE WITH TRUSS SPACING
11. SEE FOOD SERVICE DRAWINGS FOR BOTH ELECTRICAL AND REFRIGERATION PENETRATIONS AND DETAILS FOR ROOFTOP COMPRESSORS.
12. PAINT ANY PIPING IF REQUIRED BY CODE INCLUDING GAS PIPING
13. G.C. TO LIFT UP TO ROOF FIVE REFRIGERATION CONDENSING UNITS FOR THE FOOD SERVICE EQUIPMENT. EACH UNIT WEIGHS APPROXIMATELY 250 LBS. COORDINATE DELIVERY TIMING WITH OWNER AND FOOD SERVICE EQUIPMENT SUPPLIER.
14. TRUSS/JOIST MANUFACTURER TO SUBMIT TRUSS/JOIST DESIGN DRAWINGS AND CALCULATIONS TO PROJECT ARCHITECT FOR APPROVAL PRIOR TO FABRICATION AND DELIVERY.
15. PRE-ENGINEERED CANOPY MANUFACTURER TO SUBMIT DESIGN DRAWINGS AND CALCULATIONS TO PROJECT ARCHITECT FOR APPROVAL PRIOR TO FABRICATION AND DELIVERY.
16. DIMENSIONS TO LOCATE ROOF TOP EQUIPMENT ARE FROM FACE OF STUD TO OUTSIDE EDGE OF EQUIPMENT CURB.

ROOF LEGEND

- SINGLE PLY ROOF SYSTEM
- INDICATES DIRECTION OF DOWNWARD SLOPE OF ROOF
- ### KEYED NOTES
1. SINGLE PLY 0.50 MIN. WHITE GREASE RESISTANT PVC ROOF MEMBRANE OVER RIGID INSULATION (SEE ENERGY CODE SUMMARY FOR R-VALUE) ON EXTERIOR GRADE PLYWOOD DECK (SEE STRUCTURAL DRAWINGS) ON PRE-ENGINEERED WOOD TRUSSES.
 2. SLOPED METAL ROOF BY WALK-IN MANUFACTURER.
 3. CONTINUOUS ALUMINUM EDGE TRIM - SEE WALL SECTIONS.
 4. BUILT-UP CRICKET AS REQUIRED.
 5. HANGER ROD CANOPY SYSTEM BELOW BY G.C.
 6. ROOF DRAIN - SEE DETAIL 6/A161 AND PLUMBING DRAWINGS.
 7. ROOF OVERFLOW DRAIN - SEE DETAIL 6/A161 AND PLUMBING DRAWINGS.
 8. ROOF TOP MECHANICAL UNIT - SEE MECHANICAL DRAWINGS.
 9. EXHAUST FAN - REFER TO MECHANICAL DRAWINGS.
 10. RTU CONDENSATE DISCHARGE TO ROOF - SEE MECHANICAL DRAWINGS.
 11. ROOF CURB FOR MECHANICAL ROOF TOP UNIT - SEE DETAIL 4/A161 AND MECHANICAL DRAWINGS.
 12. REMOVE CONDENSER EQUIPMENT ON WALK-IN ROOF BY MANUFACTURER. SEE MECHANICAL DRAWINGS. G.C. COORDINATE POWER AND REFRIGERATION PIPING CHARGING REQUIREMENTS WITH COOLER SUPPLIER AND REFRIGERATION CONTRACTOR.
 13. PROVIDE ROOF WALKWAY PADS FROM ROOF ACCESS TO ALL EQUIPMENT - TYPICAL.
 14. RESTROOM EXHAUST - SEE MECHANICAL DRAWINGS.
 15. PROVIDE ALUMINUM TERMINATION STRIP AT ROOFING/WALL TRANSITION.
 16. WATER HEATER VENTS - SEE PLUMBING DRAWINGS.
 17. SIGNAGE BY SIGN VENDOR - SEE EXTERIOR ELEVATIONS.
 18. VENT THROUGH ROOF - SEE DETAIL 3/A161 AND PLUMBING DRAWINGS.
 19. THROUGH PARAPET SCUPPER - SEE ENLARGED DETAIL 5/A501.
 20. COOKING HOOD BELOW - SEE MECHANICAL DRAWINGS.

Revisions

THRU ADDENDUM "A"
01/20/2022

EQUIP. UPDATE - 06.24.2022

PROJECT DATE
01/07/2022

Drawn By
CIH

Checked By
GRL

Sheet No.

A161