

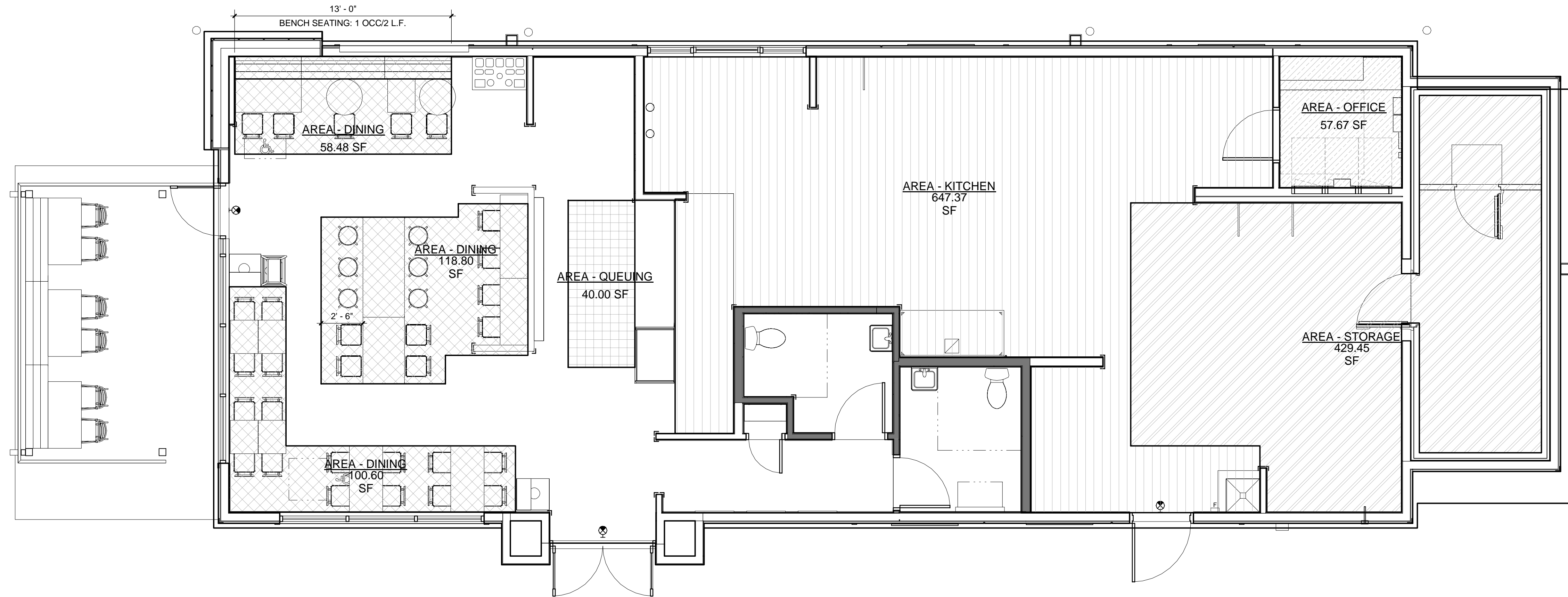
[illegible]

**ENDEAVOR 2.0**  
ROCKFISH RD (NEAR BELSHAW WAY)  
FAYETTEVILLE, NC 28306  
"Stoney Point"



# G1.0

OCCUPANCY PLAN      1/4" = 1'-0"      1



OCCUPANCY LOAD				
BY SQUARE FOOTAGE TABLE 1004.1.1			BY SEAT COUNT	
SPACE	S.F.	LENG TH	LOAD	OCCUPANCY
Area	Not Placed			
AREA - DINING	118.80 SF		15	8
AREA - DINING	58.48 SF		15	4
AREA - DINING	100.60 SF		15	7
AREA - KITCHEN	647.37 SF		200	3
AREA - OFFICE	57.67 SF		100	1
AREA - QUEUING	40.00 SF		5	8
AREA - STORAGE	429.45 SF		300	1
BENCH SEATING		13 LF	2	7
TOTAL:				41
TABLE SIZE		QUANTITY	SEAT	
2 TOP BOOTH		3	6	
4 TOP		4	16	
4 TOP BOOTH		1	4	
10 TOP		1	10	
4 TOP BAR		1	4	
TABLE TOTAL		10	40	
EMPLOYEES		6		
QUEUING		8		
TOTAL		54		
OUTSIDE SEATING		12	12	
TOTAL PLUMBING LOAD		-	66	

NOTE: PER SECTION 1004.4 WE ARE INCREASING OUR OCCUPANT LOAD BASED ON ACTUAL SEAT COUNT CALCULATIONS SHOWN ABOVE. WE HAVE ACCOMMODATED ALL EXISTING AND TOILET AND HVAC LOAD REQUIREMENTS FOR THE INCREASED OCCUPANT LOAD.

\* THE LEFT SIDE OF THE TABLE SHOWS THE DESIGN OCCUPANT LOAD CALCULATED BY MAXIMUM FLOOR AREA ALLOWANCES PER OCCUPANT. PER CODE TABLE 1004.1.2 THIS OCCUPANT TOTAL IS NOT BEING USED.

\* THE RIGHT SIDE OF THE TABLE SHOWS THE TOTAL ACTUAL SEAT COUNT. THE TOTAL SEAT COUNT IS GREATER IN NUMBER THAN THE FLOOR AREA COUNT AND IS THE WORST CASE SCENARIO. THIS TOTAL IS BEING USED TO DETERMINE OUR DESIGN OCCUPANT LOAD AND EXISTING REQUIREMENTS. TOILET FIXTURE REQUIREMENTS AND HVAC HEATING/COOLING AND VENTILATION REQUIREMENTS.

\* THIS INCREASED OCCUPANT LOAD IS PER SECTION 1004.2 OF THE INTERNATIONAL BUILDING CODE.