

LIGHTING CONTROL NARRATIVE

Interior:
Bathrooms and the storage closet are provided with local occupant sensing switches. These switches shall be manual on to 100% and automatic off within 30 minutes of an unoccupied condition (with the option for manual off control).

All other lighting is provided with manual controls in one central location as detailed on this sheet. These lighting circuits are routed through automatic time-switch controls which have a (2 hour maximum) manual override switch. General lighting in the kitchen/back-of-house and the dining area are wired for light reduction by switching of alternate luminaires.

The building owner/operator is responsible for programming the time switch controls with the building schedule for full building lighting shutoff during unoccupied hours and all other special dates.

To comply with required specific application controls, all display/accent lighting is switch separately.

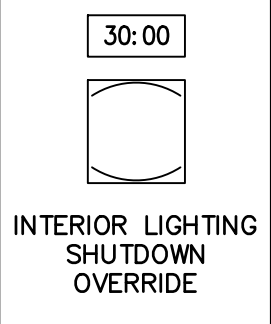
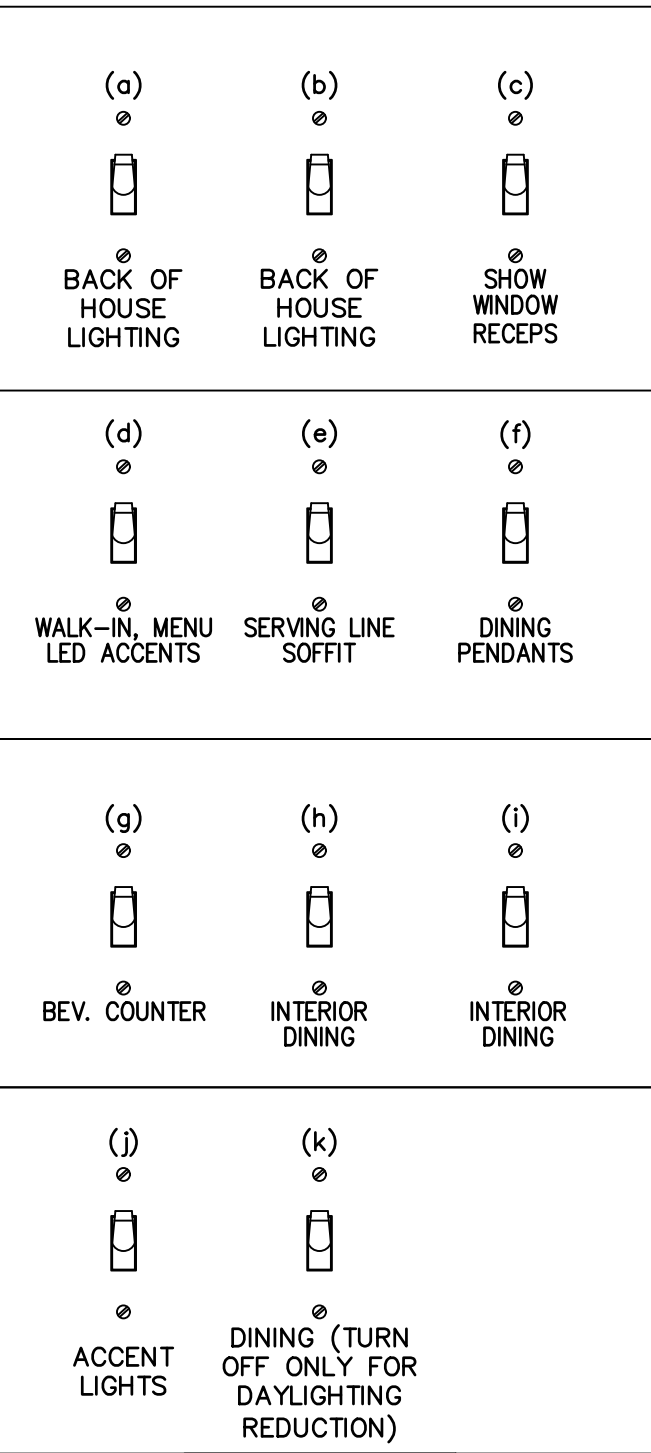
Emergency lighting for the kitchen is provided by fixtures with battery backup drivers. Emergency lighting for all other spaces is powered by two inverters, one serving the bathrooms, the other serving the dining area and vestibule. These lights also serve as night lights and remain powered on 24/7.

Additional Notes

- Manual daylight controls are provided in all daylight zones.
- Occupant sensor controls are only required in the bathrooms and storage room as required by the 2012 IECC. No other spaces fall under this requirement as there are greater than 300 square feet of enclosed space.

Exterior:
Power for exterior building lights and building signs are routed through contactors that are automatically activated by a combination roof mounted photosensor and time switch.

NOTE:
CONTRACTOR TO INSTALL (4) 3 GANG SWITCH BOXES AS SHOWN BELOW. DO NOT INSTALL SEPARATE/INDIVIDUAL BOXES FOR EACH SWITCH



1. ALL FLUORESCENT FIXTURES SHALL HAVE ELECTRONIC BALLASTS WITH 20% OR LESS THD.
2. CONTRACTOR SHALL PROVIDE ALL REQUIRED HARDWARES, BRACKETS, ETC. FOR A COMPLETE INSTALLATION.
3. ALL LIGHTING FIXTURES SHALL BE SUPPORTED PER N.E.C. 410-16(C). SEE DETAIL, SHEET 4 / E-400.
4. CONTRACTOR SHALL INSTALL ALL LIGHTING FIXTURES INCLUDING OWNER-FURNISHED FIXTURES.
5. ALL FIXTURE BALLASTS SHALL BE U.L. LISTED.
6. G.C. SHALL INSTALL OWNER SUPPLIED LED & CUT TO PROPER LENGTH
7. ALL MULTI-WIRE BRANCH CIRCUITS TO HAVE SEPARATE NEUTRALS TO MEET THE REQUIREMENTS OF 2014 NFPA 70 NATIONAL ELECTRICAL CODE.
8. ALL FLUORESCENT FIXTURES SHALL HAVE INTEGRAL DISCONNECTING MEANS PER 2014 NFPA 70 NATIONAL ELECTRICAL CODE.
9. ALL CIRCUITRY SHOWN WITHOUT TICKS SHALL HAVE (2) WIRES PLUS EQUIPMENT GROUNDING CONDUCTOR.
10. 'N.L.' DESIGNATION INDICATES NIGHT LIGHT ON UNSWITCHED CIRCUIT.
11. REFER TO ARCHITECTURAL SHEET A-105 FOR LIGHTING FIXTURE LOCATIONS.

LIGHTING GENERAL NOTES 2
NOT TO SCALE E-101

1. SWITCHBANK. REFER TO SCHEDULE THIS SHEET (4/ E-101).
2. ROUTE HOMERUN THROUGH LIGHTING SWITCHBANK 'A' (SWITCH AS NOTED IN LOWER CASE). REFER TO SCHEDULE (4 / E-101) FOR MORE INFORMATION. HOMERUN ALSO ROUTED THRU LIGHTING CONTROL CONTRACTOR, REFER TO DETAIL 11/E400.
3. ROUTE THROUGH CONTACTS IN HOOD CONTROL PANEL 'M4' FOR CIRCUIT POWER. REFER TO DETAILS, SHEETS 3 / E-401.
4. PROVIDE SEPARATE UNSWITCHED HOT CONDUCTOR (SAME CIRCUIT, NOT CONTROLLED BY SWITCH IN SWITCHBANK) TO LOCALLY SWITCHED FIXTURES AND EMERGENCY FIXTURE BATTERY TRIGGER LEADS.
5. DUPLEX RECEPTACLE AT SOFFIT FOR LED ROPE. INSTALL ON BACK OF BULKHEAD ABOVE CEILING. REFER TO DETAILS ON SHEET A-402 FOR MORE INFORMATION.
6. WALK-IN COOLER LIGHT FIXTURES AND PILOT LIGHT SWITCH PROVIDED WITH COOLER. REFER TO 'COOLER EVAPORATOR COIL' WIRING DIAGRAM, SHEET 8 / E-400.
7. WALK-IN FREEZER LIGHT FIXTURE AND PILOT LIGHT SWITCH PROVIDED WITH FREEZER. REFER TO 'FREEZER LTG AND DOOR HEATER WIRING DIAGRAM', SHEET 10 / E-400.
8. REFER TO ROOF PLAN FOR BATHROOM EXHAUST FAN POWER. EXHAUST FAN CONTROLLED THROUGH TIMED LIGHTING CONTRACTOR, REFER TO DETAIL 11/E400.
9. FIXTURES THIS ROOM SHALL BE LOCALLY SWITCHED.
10. LIGHTING INVERTER TO BE MOUNTED ABOVE THE ELECTRICAL PANELS, NEXT TO CEILING. COORDINATE THE EXACT LOCATION IN THE FIELD W/OWNER. REFER TO WIRING DIAGRAM 5/E-400.
11. LED TRANSFORMER LOCATION, MOUNT ABOVE CEILING.

LIGHTING KEYED NOTES 3
NOT TO SCALE E-101

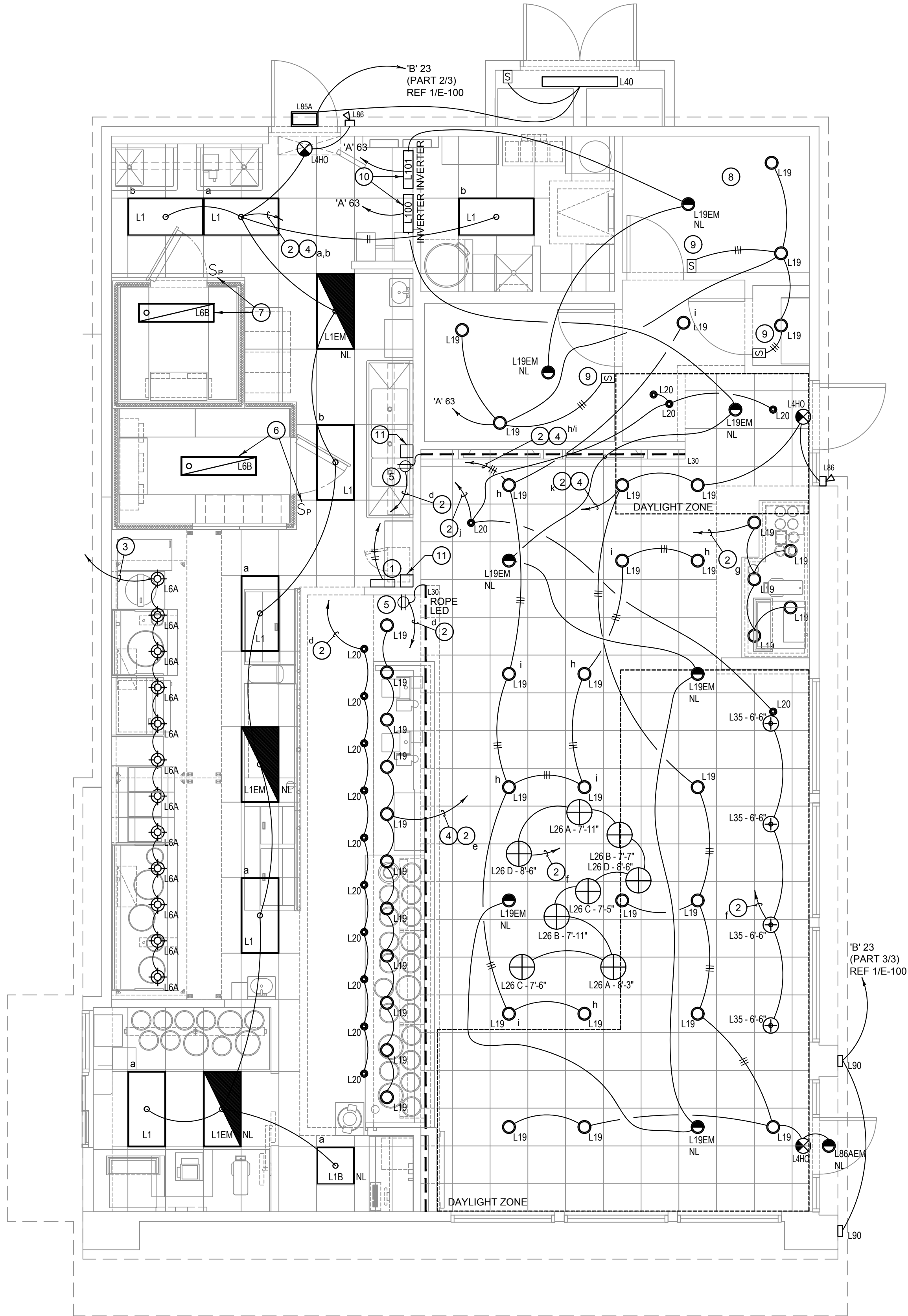
NOTE:
ALL INTERIOR LIGHTING CIRCUITS TO BE ROUTED THRU CONTACTOR FOR TIMED SHUTDOWN. REFER TO DETAIL 11/E400.

SWITCHBANK SCHEDULE

TAG	SWITCH TYPE	AREA SERVED / SWITCH LABEL	CIRCUIT	LOAD
a	TOGGLE SWITCH	BACK-OF-HOUSE	'A' 45	261 VA
b	TOGGLE SWITCH	BACK-OF-HOUSE	'A' 45	229 VA
c	TOGGLE SWITCH	SHOW WINDOW RECEPTACLE	'A' 49	540 VA
d	TOGGLE SWITCH	W/I, MENU, LED ACCENTS	'A' 1	122 VA
e	TOGGLE SWITCH	SERVING LINE SOFFIT	'A' 45	154 VA
f	TOGGLE SWITCH	DINING PENDANTS	'A' 47	56 VA
g	TOGGLE SWITCH	BEVERAGE COUNTER	'A' 47	70 VA
h	TOGGLE SWITCH	INTERIOR DINING	'A' 47	70 VA
i	TOGGLE SWITCH	INTERIOR DINING	'A' 47	70 VA
j	TOGGLE SWITCH	ACCENT LIGHTS	'A' 47	35 VA

* SEE DAYLIGHT REDUCTION CONTROL WIRING DIAGRAM ON SHEET 5/E400.

LIGHTING SWITCHBANK SCHEDULE 4
NOT TO SCALE E-101



LIGHTING FLOOR PLAN 1
Scale: 1/4"=1'-0" E-101



PANDA EXPRESS INC.
1683 Walnut Grove Ave.
Rosemead, California
91770

Telephone: 626.799.9898
Facsimile: 626.372.8288

All ideas, designs, arrangement and plans indicated or represented by this drawing are the property of Panda Express Inc. and were created for use on this specific project. None of these ideas, designs, arrangements or plans may be used by or disclosed to any person, firm, or corporation without the written permission of Panda Express Inc.

REVISIONS:

ISSUE DATE:

1ST	PERMIT SET	10-05-18
2ND	BID SET	11-20-18

DRAWN BY: BEN

PANDA PROJECT #: S8-19-D6462
ARCH PROJECT #: 180044.013



PANDA EXPRESS

TRUE WARM & WELCOME 2200
CONESTOGA PKWY & HISTORICAL TRAIL
SHEPHERDSVILLE, KY 40165

E-101

LIGHTING FLOOR PLAN

TRUE WARM & WELCOME 2200