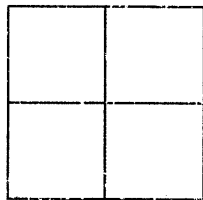


CORNER RECORD

Agency Index

BK 135 PG 84

Document Number

CR 14682City of EDEN TOWNSHIPCounty of ALAMEDA, CaliforniaBrief Legal Description WELL MONUMENT LOCATED WITHIN BALKAN COURT AT WEST CAVENDISH DR

CORNER TYPE

Government Corner ☐ Control ☒
Meander ☐ Property ☐
Rancho ☐ Other ☐

Date of Survey 9/1/2020

COORDINATES (Optional)

N. _____ E. _____

Elevation _____

Units Metric ☐ U.S. Survey Foot ☐

Horizontal Datum _____

Zone _____ Epoch Date _____

Vertical Datum _____

☐ Complies with Public Resources Code §§8801-8819☐ Complies with Public Resources Code §§8890-8902PLS Act Ref: ☐ 8765 (d) ☒ 8771 ☐ 8773 ☐ Other: _____

Corner/
Monument: ☒ Left as found ☐ Established ☐ Rebuilt ☒ Pre-Construction
☐ Found and tagged ☐ Reestablished ☒ Referenced ☐ Post-Construction

Narrative of corner identified and monument as found, set, reset, replaced, or removed:

☐ See sheet #2 for description (s):

FOUND 1/8" PIN IN CONCRETE IN MONUMENT WELL.

FOUND AND SET POINTS AS SHOWN ON PAGE 2.

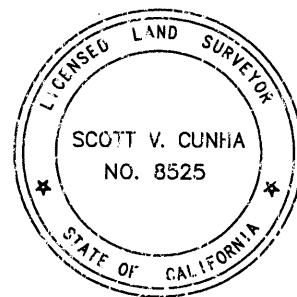
THIS POINT WAS REFERENCED PRIOR TO A CONSTRUCTION PROJECT IN THE VICINITY.

THE TIES SHOWN HEREON ARE FOR THE PURPOSE OF PERPETUATING FOUND MONUMENTATION.

NO CLAIM IS MADE AS TO THE RELATIONSHIP OF THE POINTS OR LINES SHOWN HERON TO TRUE BOUNDARY LOCATION.

SURVEYOR'S STATEMENT

This Corner Record was prepared by me or under my direction in conformance with

the Professional Land Surveyors' Act on September 2, 2020Signed Scott V. Cunha P.L.S. or R.C.E. No. 8525
SCOTT V. CUNHA

COUNTY SURVEYOR'S STATEMENT

This Corner Record was received _____

and examined and filed OCT 21 2020Signed D. Ian Wilson P.L.S. or R.C.E. No. 7010Title COUNTY SURVEYOR

County Surveyor's Comment _____

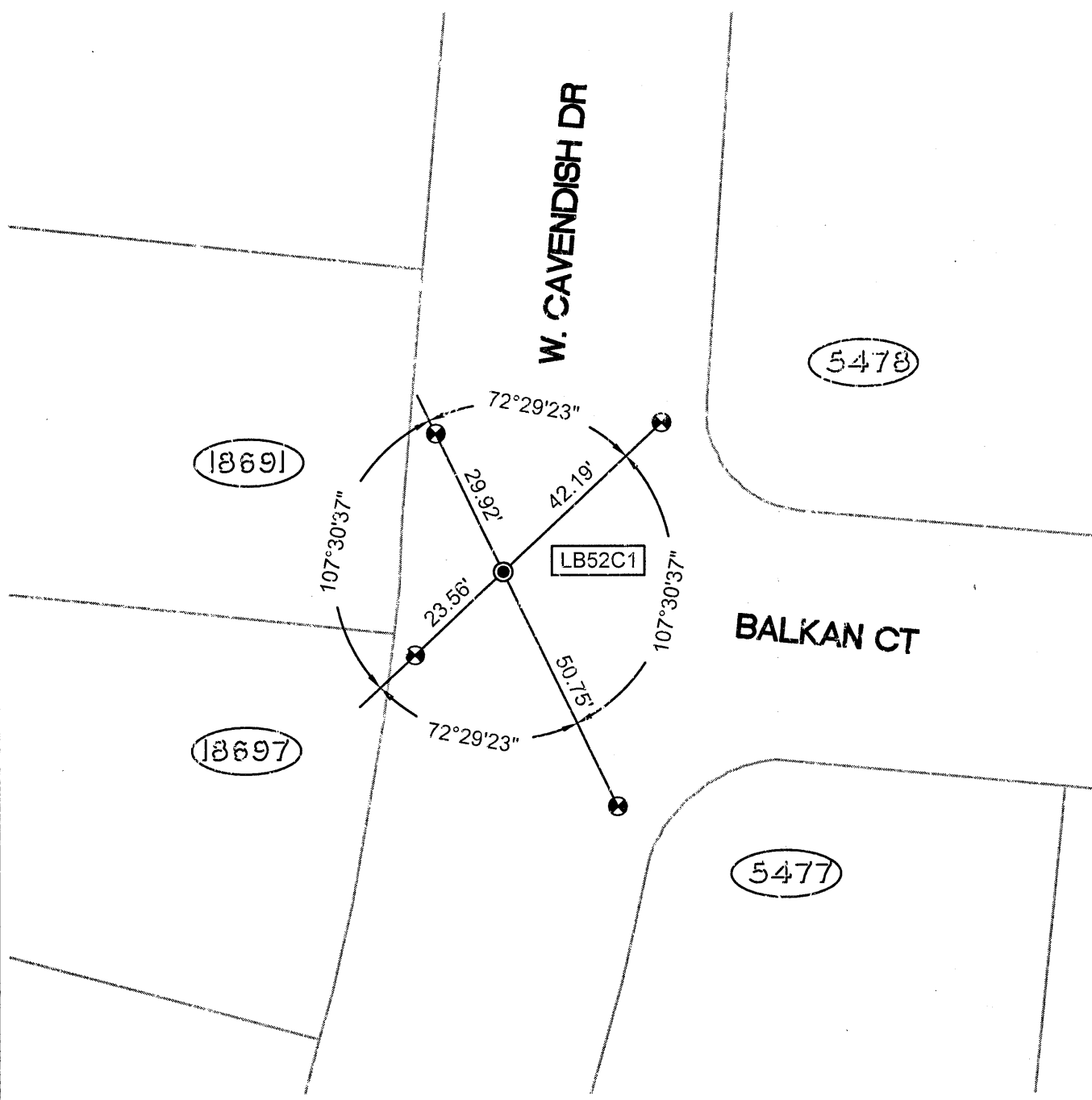


SCALE: 1"=30'

LEGEND

- FOUND 1/8" PIN IN MONUMENT WELL
- ⊗ SET NAIL AND TAG IN CURB STAMPED "TOWILL RP"
- AA### ALAMEDA COUNTY MONUMENT ID
- 19592 REFERENCE STREET ADDRESS

ALL MEASUREMENTS ARE IN U.S. SURVEY FOOT AND DECIMAL THEREOF



16587-Balkan-CR-1