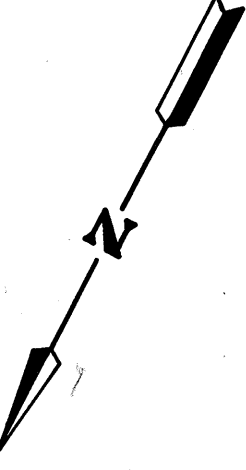
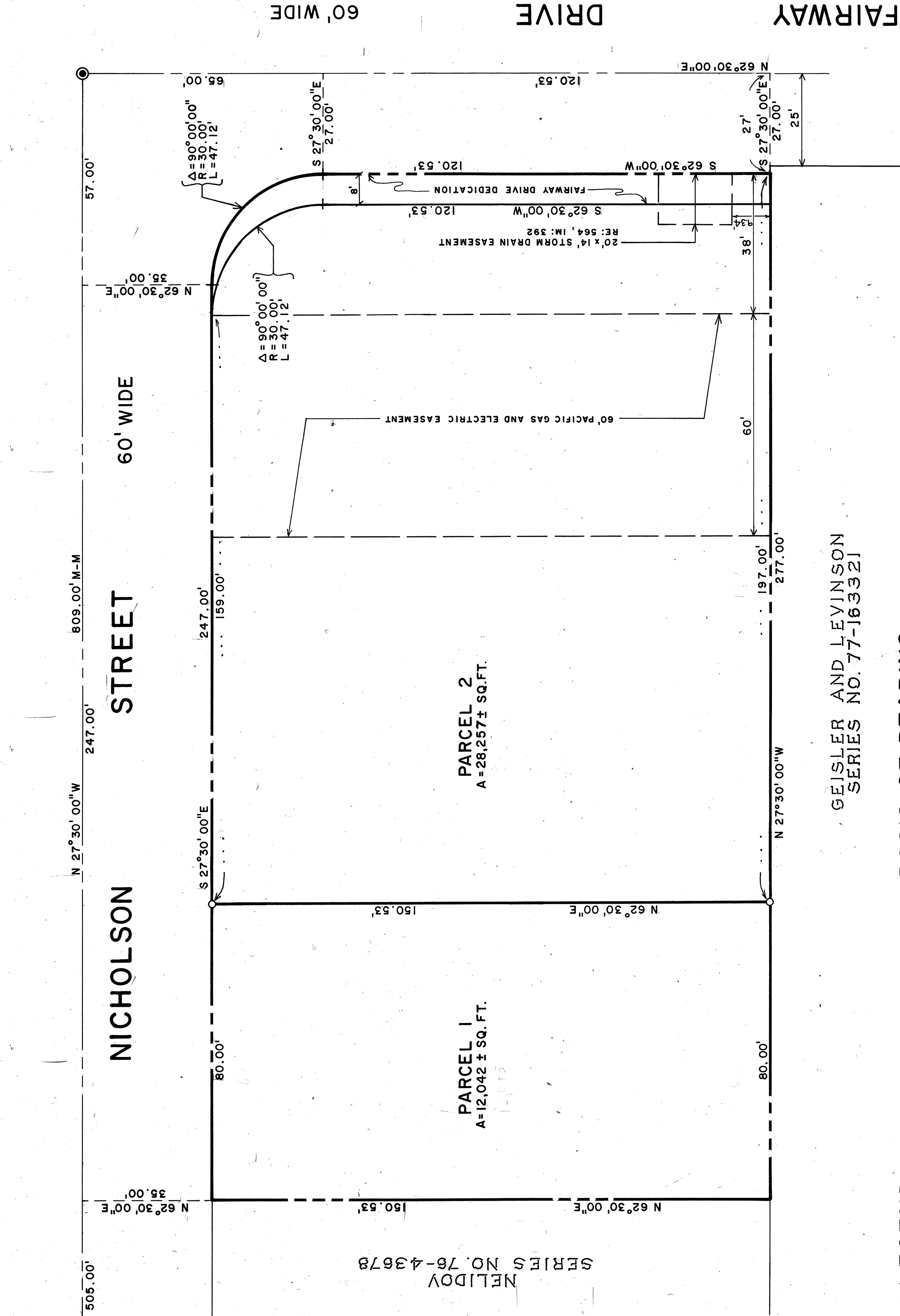


REPUBLIC AVENUE



NELEDOV
SERIES NO. 76-43678

PARCEL 1
A=12,042 ± SQ. FT.

PARCEL 2
A=28,257 ± SQ. FT.

GEISLER AND LEVINSON
SERIES NO. 77-163321

LEGEND

- FOUND CITY MONUMENT
- SET 1" IRON PIPE WITH PLASTIC PLUG RCE 25392
- EXTERIOR BOUNDARY LINE
- PARCEL LINE
- MONUMENT LINE

BASIS OF BEARING

THE BEARING OF THE MONUMENT LINE OF NICHOLSON STREET FROM THE CITY MONUMENT AT FAIRWAY DRIVE TO THE CITY MONUMENT AT REPUBLIC AVENUE WAS TAKEN AS N 27°30'00"W PER TRACT MAP 2683.

REFER

- AAA ENGINEERING COMPANY, JOB NO. 88130.
- TRACT 2683 FILED NOV 17, 1964 IN BOOK 49 MAPS PAGE 75-76.
- PARCEL MAP NO. 747 FILED, AUG 6, 1971 IN BOOK 69 MAPS PAGE 88.

PARCEL MAP 5424

RESUBDIVISION
OF A PORTION OF LOT 4, TRACT 2683
CITY OF SAN LEANDRO, ALAMEDA COUNTY
STATE OF CALIFORNIA

AAA ENGINEERING COMPANY
HAYWARD, CALIFORNIA

SCALE 1" = 20' APRIL, 1988

SHEET 2 OF 2 SHEETS

DRAWN BY: W. VENCILL

88130