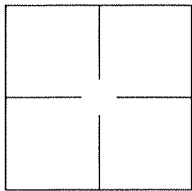


CORNER RECORD

Agency Index BK 140 Pg 27Document Number CR 14636City of UNINCORPORATED AREACounty of ALAMEDA, CaliforniaBrief Legal Description ALAMEDA COUNTY MONUMENT CB62E2

CORNER TYPE

Government Corner ☐ Control ☐
Meander ☐ Property ☐
Rancho ☐ Other ☒

Date of Survey 2020-08-12

COORDINATES (Optional)

N. _____ E. _____

Elevation _____

Units Metric ☐ U.S. Survey Foot ☐

Horizontal Datum _____

Zone _____ Epoch Date _____

Vertical Datum: _____

☐ Complies with Public Resources Code §§8801-8819☐ Complies with Public Resources Code §§8890-8902PLS Act Ref.: ☐ 8765(d) ☒ 8771 ☐ 8773 Other: _____

Corner/ Monument: ☒ Left as found ☐ Established ☐ Rebuilt ☒ Pre-Construction
☐ Found and tagged ☐ Reestablished ☒ Referenced ☐ Post-Construction

Narrative of corner identified and monument as found and set or reset:

☒ See sheet #2 for description(s):

ALAMEDA COUNTY MONUMENT CB62E2

SURVEYOR'S STATEMENT

This Corner Record was prepared by me or under my direction in conformance with

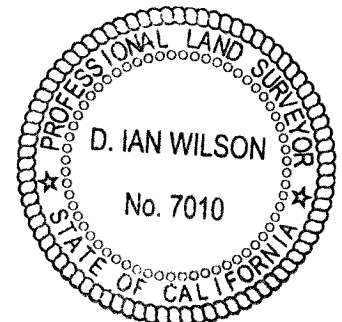
the Professional Land Surveyor's Act on 30 November, 2020.Signed [Signature] P.L.S. or R.C.E. No.: 8040

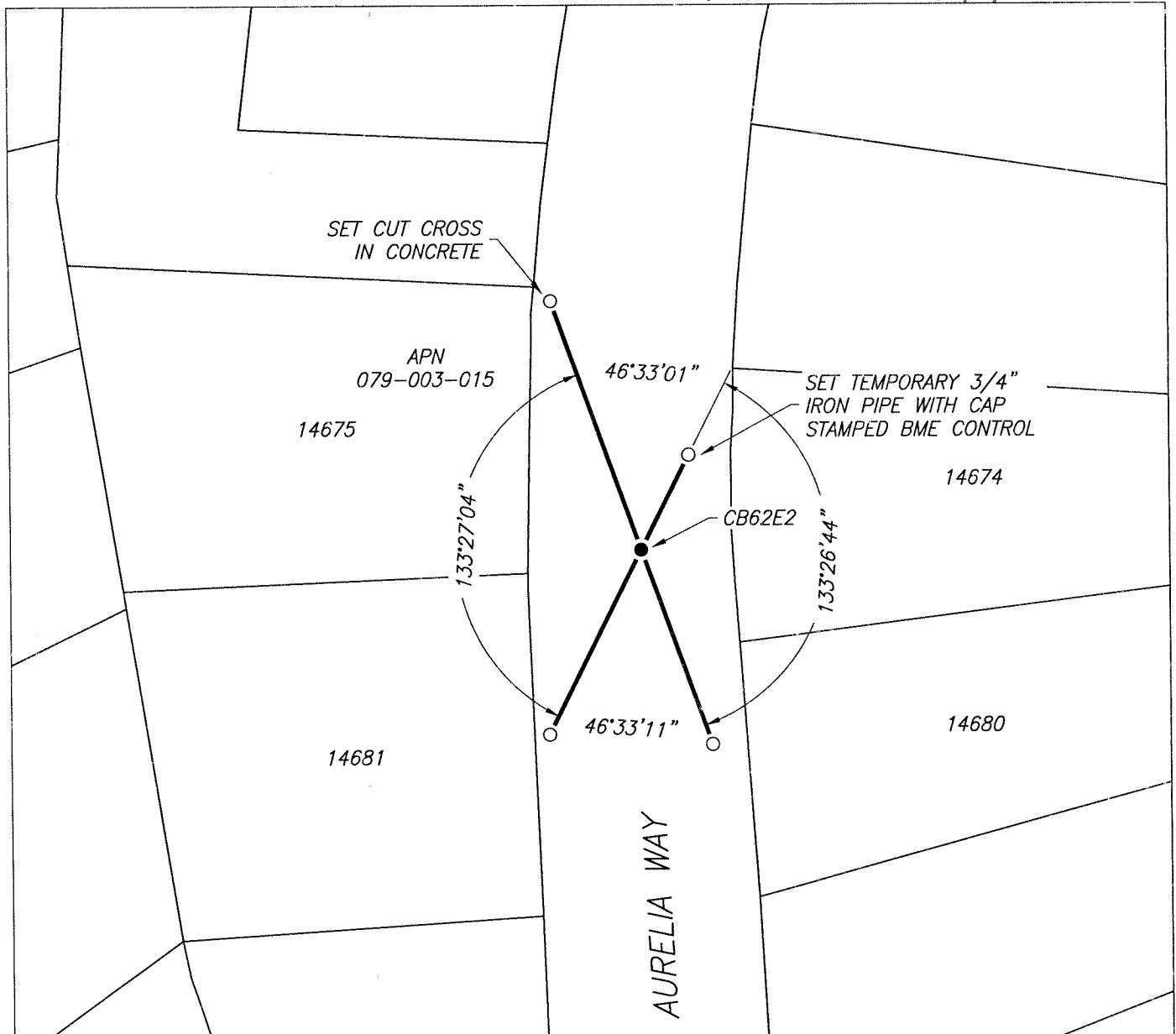
COUNTY SURVEYOR'S STATEMENT

This Corner Record was received _____, _____ and examined

and filed AUG 24 2021.Signed D. Ian Wilson P.L.S. or R.C.E. No.: 7010Title ALAMEDA COUNTY SURVEYOR

County Surveyor's Comment _____





LEGEND

- FOUND 2.5" BRASS DISK WITH 1/8" NIPPLE, IN MONUMENT WELL, STAMPED "ALAMEDA COUNTY SURVEYOR", "1+70 BC", PER (A)
- SET MAG NAIL IN ASPHALT
- 14681 REFERENCE STREET ADDRESS
- APN ASSESSORS PARCEL MAP

REFERENCES

- (A) CORNER RECORD 1875, FILED FOR RECORD ON NOVEMBER 4, 2003, IN BOOK 16 OF CORNER RECORDS, AT PAGE 68, ALAMEDA COUNTY RECORDS

SCALE  1" = 30'