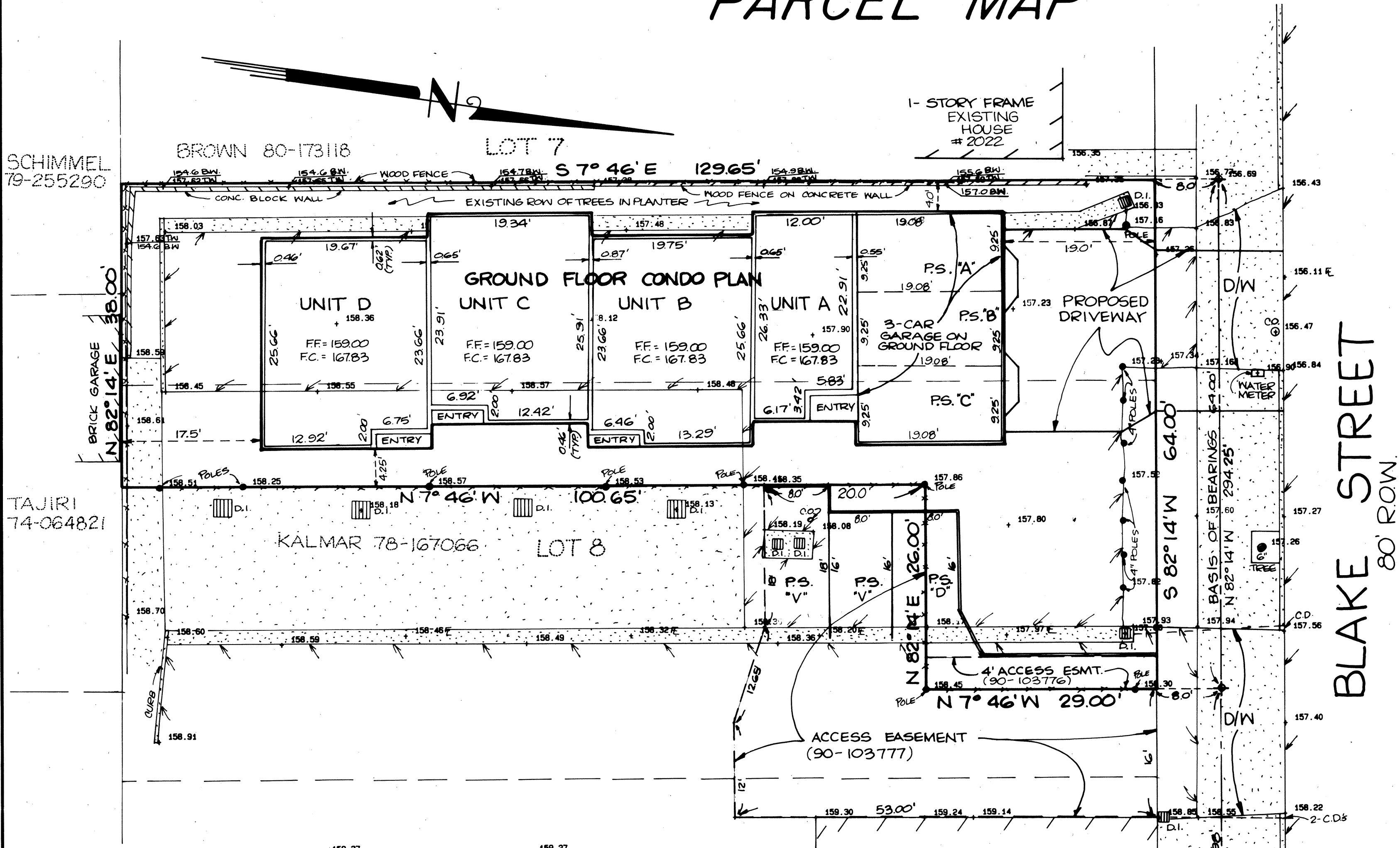


PARCEL MAP



LEGEND	
	FOUND CROSS
	CONCRETE
	EDGE OF ASPHALT
	EDGE OF EXISTING BUILDING
	FENCE
	TREE
	D.I. DRAIN INLET
	C.D. CURB DRAIN
	T.W. TOP OF WALL
	B.W. BASE OF WALL
	C.O. CLEAN-OUT
	S.S. SANITARY SEWER
	M.H. MANHOLE
	F. FLOWLINE
	D.W. DRIVEWAY
	P.S.V. PARKING SPACE, VISITOR
	T.C. TOP OF CURB
	P.S.A. PARKING SPACE, UNIT "A"
	D-A DECK, UNIT "A"

BENCHMARK: SQUARE CUT IN T.C., MOST EASTERLY POINT OF NORTHWEST BULB @ BLAKE & SHATTUCK, PER CITY OF BERKELEY ENGINEERING DIVISION RECORDS, CITY OF BERKELEY DATUM.

BASIS OF BEARINGS: ROW OF CROSSES IN BLAKE STREET, TAKEN AS N 82° 14' E PER LOT LINE ADJUSTMENT MAP RECORDED ON MAY 27, 1987 IN SERIES NO. 87-148003 ALAMEDA COUNTY RECORDS.

FIRE HYDRANT LOCATED AT SOUTHWEST CORNER OF BLAKE AND SHATTUCK.

LOT AREA = 5681 SQ. FT.

REFER TO DECLARATION OF COVENANTS, CONDITIONS AND RESTRICTIONS FOR EXPLANATION OF PARKING RESTRICTIONS AND RESTRICTED COMMON AREA.

A SUBDIVISION FOR CONDOMINIUM PURPOSES OF

A PORTION OF LOTS 7 AND 8, MAP OF SHATTUCK TRACT NO. 4 (15 M. 10); ALSO BEING PARCEL 2 OF THE LOT LINE ADJUSTMENT MAP RECORDED

MAY 27, 1987 (87-148003)

BERKELEY, ALAMEDA COUNTY, STATE OF CALIFORNIA

OWNER / SUBDIVIDER:

KPW PARTNERS
2231-A COMMERCE AVE.
CONCORD, CA. 94520
(415) 686-4230

ENGINEER:

MORAN ENGINEERING
463 KENTUCKY
BERKELEY, CA. 94707
(415) 527-7744

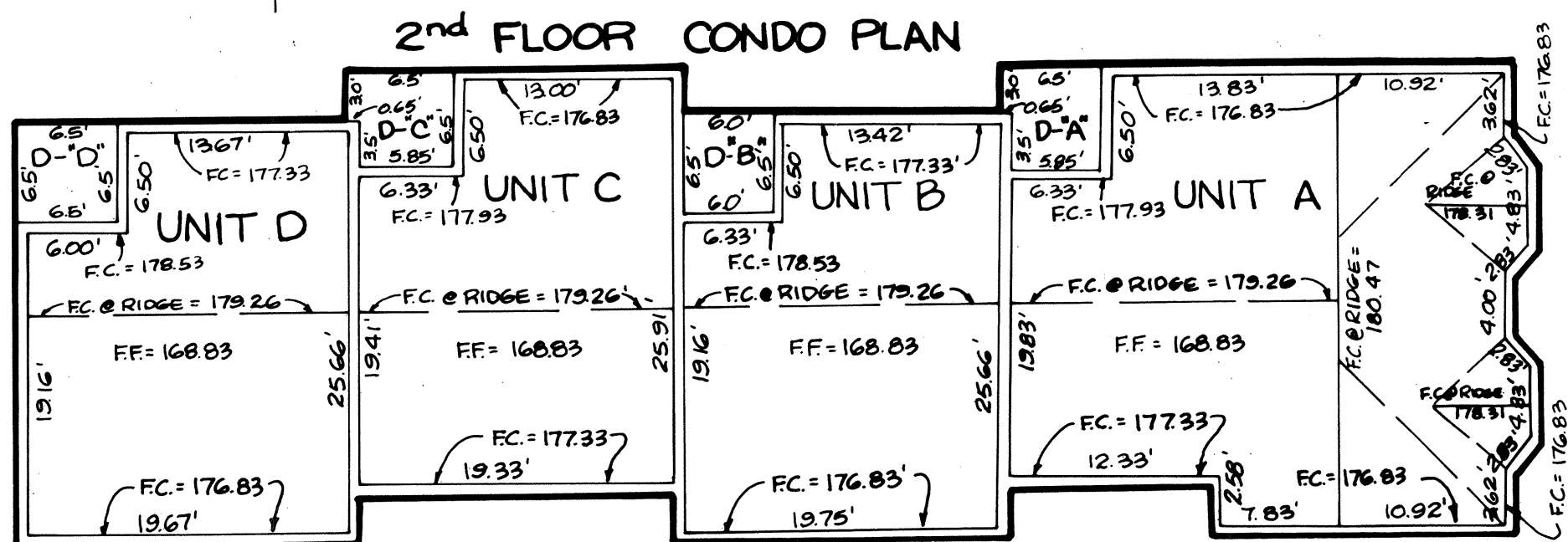
SCALE 1"=10'

P.M. 5947

DECEMBER, 1990

F.B. 430 SHT. 2 OF 2

90-2415



Parcel Map 5747

Map BK 196 pg 60

BK 196 Pg 60