

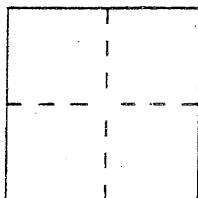
CORNER RECORD

Document Number CR 2963

City of Oakland

County of Alameda, California

Brief Legal Description Port of Oakland Monument H130 Per ROS 29/24



CORNER TYPE

Government Corner ☐ Control ☒
 Meander ☐ Property ☐
 Rancho ☐ Other ☐
 Date of Survey _____

COORDINATES

(Optional)

N. 2114935.946
 E. 6053168.956
 Zone 3 Datum NAD-83
 Elev. N/A

Corner — Left as found ☒ Found and tagged ☐ Established ☐ Reestablished ☐ Rebuilt ☐

Identification and type of corner found: Evidence used to identify or procedure used to establish or reestablish the corner:
Port of Oakland Brass Disk in Monument Well stamped H130, as shown on
Record of Survey 1847 filed for record in Book 29 Record of Survey Maps
at Page 23 through 26, Alameda County Records. Reference points were
set using GPS to ensure preservation per Section 8771 of the Business
and Professional Code.

A description of the physical condition of the monument as found and as set or reset: _____

The monument is in good condition and reference points were set as
shown on reverse of this corner record.

SURVEYOR'S STATEMENT

This Corner Record was prepared by me or under my direction in conformance with
 the Land Surveyors' Act on May 24 192007

Signed Ross G. Stephenson L.S. or R.C.E. Number RCE 27318

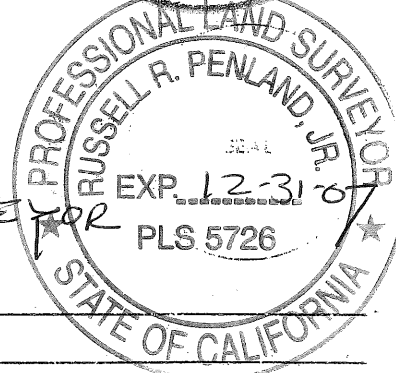
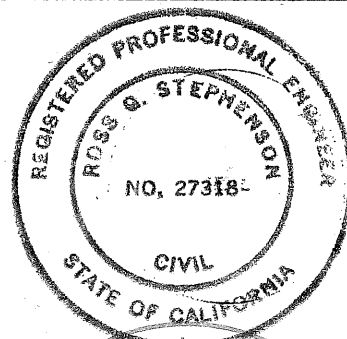
COUNTY SURVEYOR'S STATEMENT

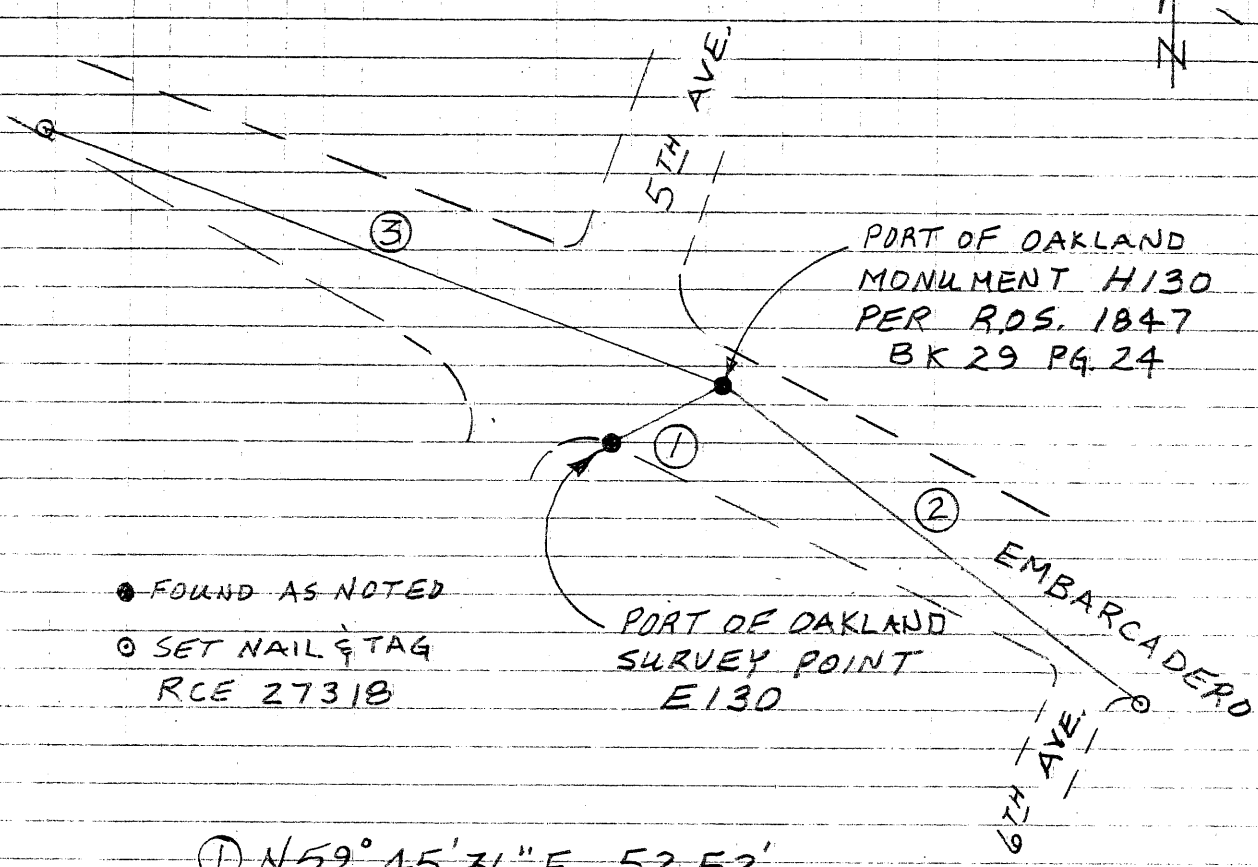
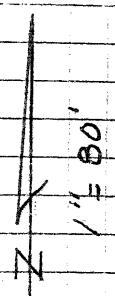
This Corner Record was received _____ 19 ____ and examined

and filed DD 6-11-2007

Signed Russell R. Penland, Jr. Title COUNTY SURVEYOR

County Surveyor's Comment _____





● FOUND AS NOTED
○ SET NAIL & TAG
RCE 27318

- ① $N59^{\circ}45'36''E, 52.52'$
- ② $N52^{\circ}38'25''W, 218.74'$
- ③ $S68^{\circ}54'35''E, 303.19'$