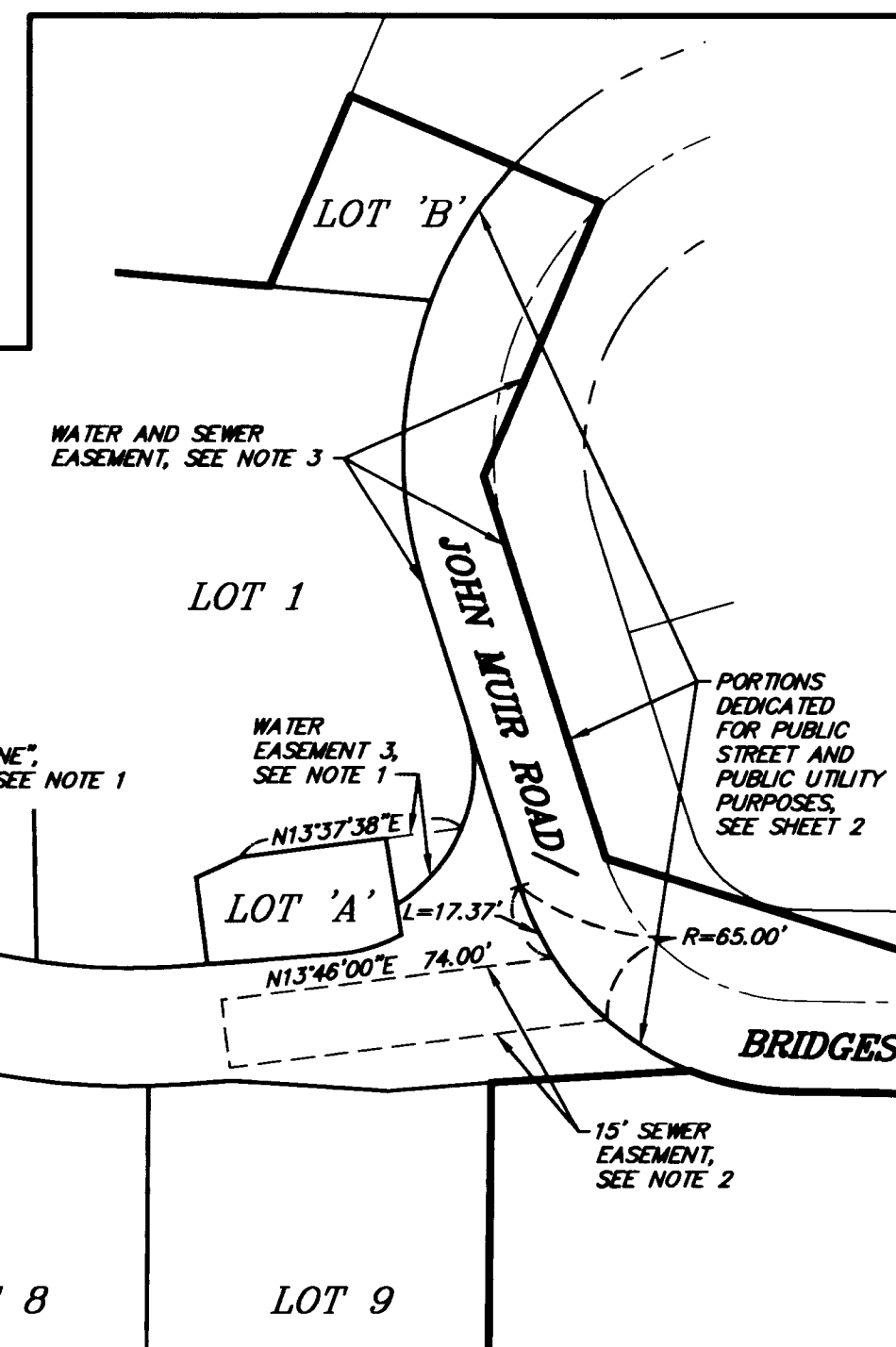
RESERVATIONS FOR P.U.E.

-
- LOT 4
- LOT 'G', "BRIDGES LANE",
PRIVATE ACCESS &
PEDESTRIAN EASEMENT
RESERVED HEREON FOR
THE BENEFIT OF TRACT
12-001 (SEE NOTE 1)
- LOT 2
- LOT 1
- LOT 'A'
(SEE NOTE 2)
- WALL MAINTENANCE EASEMENT
RESERVED HEREON FOR THE
BENEFIT OF TRACT 12-001
- LOT 'C'
(SEE SHEET 2)
- WALL MAINTENANCE EASEMENT
RESERVED HEREON FOR THE
BENEFIT OF TRACT 12-001
- SKIER ACCESS EASEMENT
RESERVED HEREON FOR THE
BENEFIT OF TRACT 12-001
(SEE NOTE 1)
- LOT 5
- LOT 6
- LOT 7
- LOT 8
- LOT 9
- ALDIS
PHASE I
UNITS 1-4

- RESERVATIONS FOR WALL MAINTENANCE EASEMENTS, SKIER ACCESS EASEMENT,
PRIVATE ACCESS EASEMENT AND PEDESTRIAN EASEMENT

IN THE TOWN OF MAMMOTH LAKES, MONO COUNTY, CALIFORNIA
BEING A RESUBDIVISION OF LOT 1, TRACT NO. 36-249 ALTIS
MAMMOTH, TMB 10/106 EXCEPT THE NE POR. THEREOF AND
ALSO EXCEPT ALTIS MAMMOTH PHASE 1 PER CPB 2/78

